

Using CPS Devices in Aware

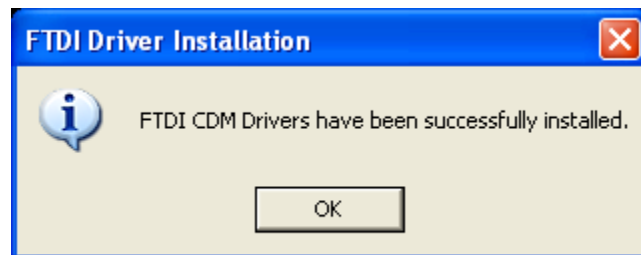
Installation and Setup

Before using the E-instruction CPS devices with Aware, you will need to setup the hardware and install the necessary software. Begin by downloading the files for the receiver and remotes. Click below to download all three files.

<http://www.schoolobjects.com/CPS-Aware.zip>

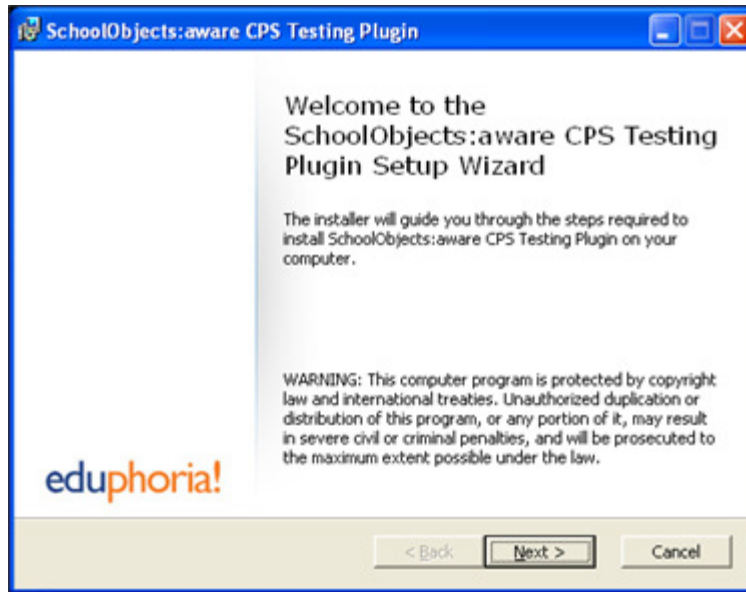
Once downloaded, expand the three files: setup.exe, Clickerssetup.exe, CDM_Setup.exe

Double click to launch the CDM_setup.exe file, and you will shortly receive a message informing you that the drivers have been installed. Those drivers allow your computer to communicate with the IR/RF receiver.



With the drivers installed, you can now connect the receiver itself. Plug the provided USB cable into the back of the receiver, and then plug the other end into an open USB port in your computer. Windows will detect the new device automatically. Now the hardware is ready to go!

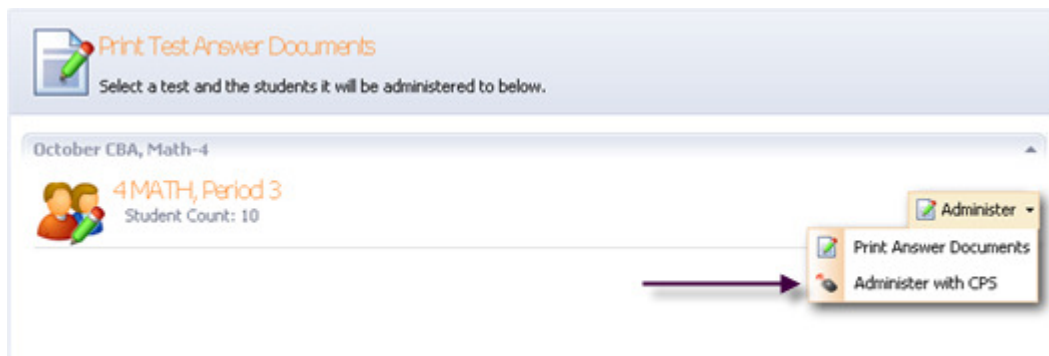
Next, you will need to install the Aware plug-in for using the remotes. Launch the Setup.exe file found in the download mentioned above. This will detect that you have the Microsoft .Net Framework installed, and then it will launch the setup wizard for the plug-in.



Follow the wizard by clicking "Next" in order to install the software. It will display a progress bar while installing. Once completed, click "Finish" to close the install wizard. Now you are ready to use the remotes!

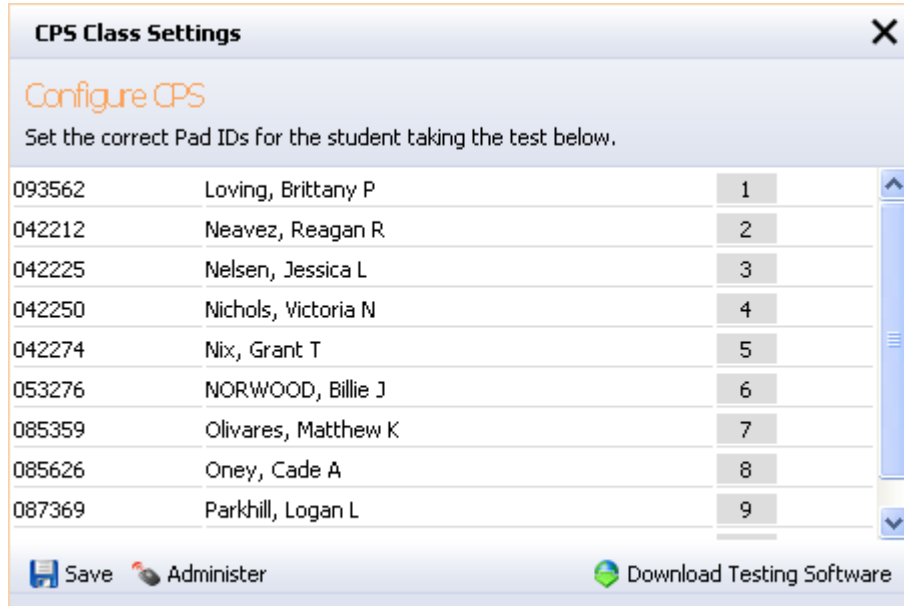
Starting the Assessment

Assessments using the CPS devices are started much like plain paper assessments. Login to Aware and select "New Benchmark Available." You will see the list of classes for each assessment, but the option to print will now be a drop down list entitled "Administer."



Click the new drop down option and choose "Administer with CPS." This will launch a new pop-up interface that will allow you to configure the assessment.

You will be presented with a list of all students in this class including their localID and name. The far right column allows you to assign the number of their CPS remote to each student. Verify and complete the remote assignments before clicking "Administer." If you are not ready to yet administer the assessment, click "Save" to save the remote assignments and close that pop-up.



After clicking "Administer," you will be prompted to login again. Your information will be verified and then the assessment management screen will appear.



This screen will display two rows of numbers. The top number is the remote number. Just below this will be the question number that the student is currently on. To begin the assessment, click "Start" in the bottom left.

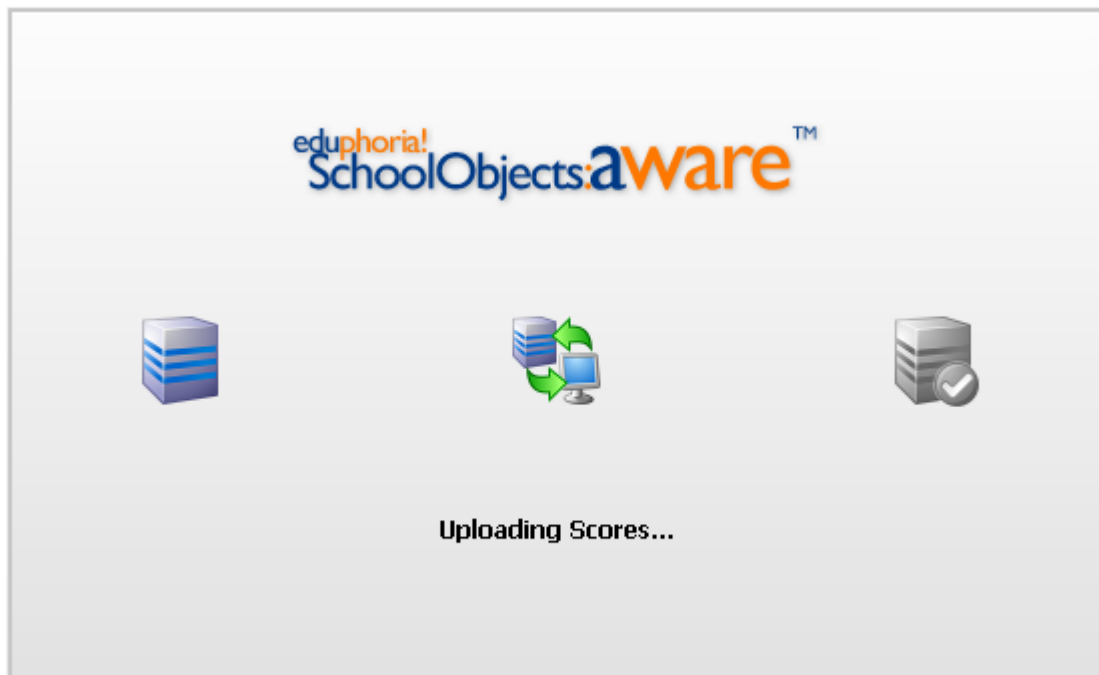
Administering the Assessment

As each question is answered, you will see the remote number flash green or red. A green flash represents a valid possible answer. This does not mean that they have answered correctly. It simply means that the student chose an answer option that is viable. For instance, pressing H on the remote will flash red.

As each question is answered, the question number on the bottom will advance to the next question. Once the assessment is completed, it will reset back to the first question. The remote number box will turn a dark blue indicating that the assessment has been completed. However, students can go back through and change their answers as needed.



Once every student has finished the assessment, click "Stop" in the bottom left. Another option in the bottom right will appear entitled "Upload Results."



This will send all gathered information to the Aware server and allow for immediate analysis. Now the assessment is completed, and you can go back and assess any students that may have been missed.