

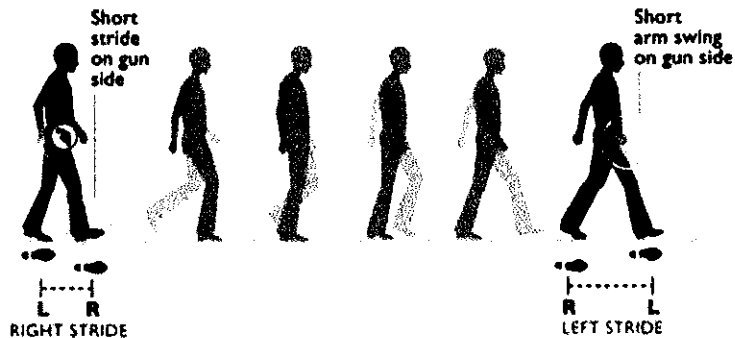
From: Saved by Windows Internet Explorer 7  
 Subject: Spotting a Hidden Handgun  
 Date: Saturday, January 01, 4501 12:00:00 AM  
 Attachments: ATT377129.jpg  
 ATT377130.dat  
 ATT377131.dat

## Spotting a hidden handgun

### ASYMMETRICAL GAIT

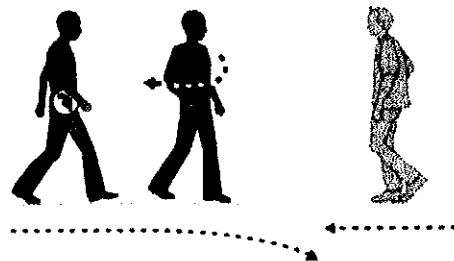
A gun in a right-hand pocket or tucked into the right side of a waistband may hinder leg movement on that side, making the right stride shorter than the left.

A slightly clipped arm swing may also signal a hidden gun: the forearm on the gun side will tend to stay close to the body, instinctively guarding the weapon.



### UPPER BODY SHIFT

When approached from the front, a person with a hidden gun will instinctively turn the gun side of his body away from the person approaching, and may veer to that side to avoid a face-to-face encounter. He is also likely to pull his arm in toward his body on the gun side.

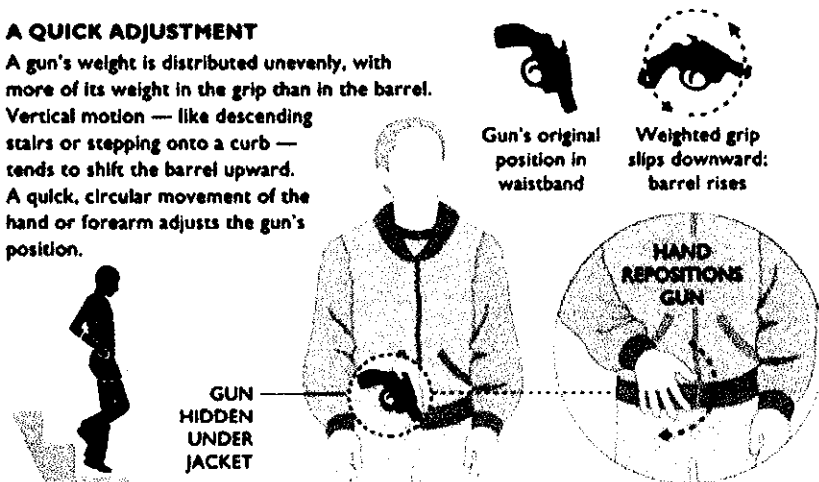


### A QUICK ADJUSTMENT

A gun's weight is distributed unevenly, with more of its weight in the grip than in the barrel.

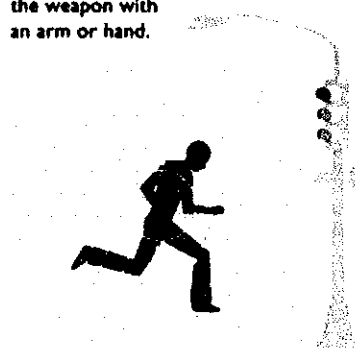
Vertical motion — like descending stairs or stepping onto a curb — tends to shift the barrel upward.

A quick, circular movement of the hand or forearm adjusts the gun's position.



### RUNNING FROM THE RAIN

When running toward shelter from rain, or across a busy street, a person concealing a gun is likely to brace the weapon with an arm or hand.



### CONSPICUOUS CLOTHING

Garments worn to conceal weapons often appear odd, mismatched, or out of season, and can actually draw attention to a person trying to avoid scrutiny. A closer look may reveal movements or other characteristic signs of a hidden handgun.

#### JACKET FITS UNEVENLY

One side hangs lower than the other, and swings like a pendulum with each step



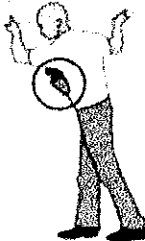
#### HAND RESTS ON GUN

Hand constantly feels for gun through clothing



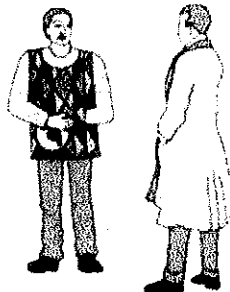
#### HOLSTER BULGES

A holstered gun appears as a lump when arms are extended or when the body bends at the waist



#### STYLES DON'T MATCH

Oversized or mismatched coat seems incompatible with other clothing



#### CLOTHES DON'T SUIT WEATHER

A coat is open in cold weather, for quick access to a gun ...

... or closed in hot weather, to conceal one

