



2024 - 2025

GPISD CTE FLIPBOOK

A Guide for Teachers,
Administrators, & Counselors

VERSION 8.1.24



Galena Park ISD
CAREER & TECHNICAL EDUCATION

TABLE OF CONTENTS

- I. Non-Discrimination Statement
- II. CTE Department Contacts
- III. Course Offerings & Details
- IV. Programs of Study Frameworks & Flowcharts
- V. Technical Dual Credit Programs
- VI. CTE Indicator Coding
- VII. CTE Master Contact List

GALENA PARK ISD

CAREER AND TECHNICAL EDUCATION

Non-Discrimination Statement

Galena Park Independent School District does not discriminate on the basis of race, color, national origin, sex, disability or age in its programs, activities, or employment and provides equal access to the Scouts of America and other designated youth groups as required by Title IX, Title VI, Section 504 of the Rehabilitation Act of 1973, and the Americans with Disabilities Act. Questions, complaints, or requests for additional information regarding the ADA and Section 504 may be forwarded to the designated ADA and Section 504 compliance coordinator.

El Distrito Escolar Independiente de Galena Park no discrimina por motivos de raza, color, nacionalidad, sexo, discapacidad o edad en sus programas, actividades o empleo y brinda igualdad de acceso a los Scouts of America y otros grupos juveniles designados según lo exige el Título IX, Título VI, Sección 504 de la Ley de Rehabilitación de 1973 y la Ley de Estadounidenses con Discapacidades. Las preguntas, quejas o solicitudes de información adicional sobre la ADA y la Sección 504 pueden enviarse al Coordinador de cumplimiento designado de la ADA y la Sección 504.

DEPARTMENT CONTACTS

Toby Castro

Director

tcastro@galenaparkisd.com

832-386-1041

Emely Macias

Administrative Assistant to Director

emacias@galenaparkisd.com

832-386-1041

Melissa Jensen

Program Director

mjensen@galenaparkisd.com

832-386-1252

Jesse Cantu

Coordinator

jcantu1@galenaparkisd.com

832-386-2296

Cathy Pulido

Administrative Assistant to Coordinator

cpulido@galenaparkisd.com

832-386-2295

Carmen Güereqüe

GPHS CTE Counselor

cguereque@galenaparkisd.com

832-386-2992

Felicia Oliver

NSSH CTE Counselor

foliver@galenaparkisd.com

832-386-4119

CTE OFFERINGS AND DETAILS

ENDORS	PEIMS #	LOCAL COURSE #	CONTACT	PATHWAYS/COURSES	ABBREV	CREDITS	WEIGHTED GPA	ADVANCED CTE	PREREQUISITE	CAMPUS	GRADE
AGRICULTURE, FOOD, AND NATURAL RESOURCES											
BUSINESS & INDUSTRY	13000200	0A0001/02	Jensen	Principles of Agriculture, Food, and Natural Resources	PRINAFNR	1				GPHS, NS9	9-12
	13000300	0A1001/02	Jensen	Livestock Production	LIVEPROD	1		Adv		GPHS, NSSH	10-12
	13000400	0A1100	Jensen	Small Animal Management	SMANIMGT	.5				GPHS, NSSH	9-12
	13000500	0A1200	Jensen	Equine Science	EQUINSCI	.5				GPHS, NSSH	9-12
	13000700	0A1401/02	Jensen	Advanced Animal Science	ADVANSKI	1 Sci		Adv	BIO; CHEM or IPC, SMALL ANI, EQUI SCI or LIVE PROD	GPHS, NSSH	11-12
	13001800	0A5301/02	Jensen	Floral Design	FLORAL	1 Art		Adv		GPHS, NS9	9-12
	13000610	0A1311/12	Jensen	Veterinary Medical Applications Lab	VETMEDLAB	2	Yes, 5.0	Adv	SMALL ANI, EQUI SCI or LIVE PROD	GPHS, NSSH	11-12
	13002500	0A9001/02	Jensen	Practicum in Agriculture, Food, and Natural Resources	PRACAFNR1	2	Yes, 5.0	Adv		GPHS, NSSH	11-12

ARCHITECTURE AND CONSTRUCTION											
BUSINESS & INDUSTRY	13004210	0C1001/02	Jensen	Principles of Architecture	PRINARC	1				NS9	9-12
	13004600	0C3001/02	Jensen	Architectural Design 1	ARCHDSN1	1			ALG 1; ENG 1	NSSH	10-12
	13004700	0C3101/02	Jensen	Architectural Design 2	ARCHDSN2	2	Yes, 5.0	Adv	ARCHDSN1; GEOM	NSSH	11-12
	13004300	0C2001/02	Jensen	Interior Design 1	INTERDS1	1			ALG 1; ENG 1	NSSH	10-12
	13004400	0C2101/02	Jensen	Interior Design 2	INTERDS2	2	Yes, 5.0	Adv	ENG 2; GEOM; INTERDS1	NSSH	11-12
	13004500	0C2201/02	Jensen	Practicum in Interior Design	PRACIDS1	2	Yes, 5.0	Adv	INTERDS2	NSSH	12
	13004800	0C3201/02	Jensen	Practicum in Architectural Design	PRACADS1	2	Yes, 5.0	Adv	ARCHDSN2	NSSH	12

ARTS, AUDIO VISUAL TECHNOLOGY, AND COMMUNICATIONS											
BUSINESS & INDUSTRY	13008200	0V0001/02	Cantu	Principles of Arts, Audio /Video Technology and Communications	PRINAAVTC	1				GPHS, NS9	7-12
	13008300	0V1001/02	Cantu	Animation 1	ANIMAT1	1				GPHS, NSSH	10-12
	13008400	0V1201/02	Cantu	Animation 2	ANIMAT2	1	Yes, 5.0	Adv	ANIMAT1	GPHS, NSSH	11-12
	13008500	0V2001/02	Cantu	Audio/Video Production 1	AVPROD1	1				GPHS, NSSH	9-12
	13008510	0V2011/12	Cantu	Audio/Video Production 1 & Lab	AVLAB1	2				NS9	9-12
	13008610	0V2111/12	Cantu	Audio/Video Production 2 & Lab	AVPLAB2	2	Yes, 5.0	Adv	AVPROD1	GPHS, NSSH	10-12
	13008800	0V3001/02	Cantu	Graphic Design and Illustration 1	GRAPHDI1	1				ECHS, GPHS, NSSH	10-12
	13008200	0V3013/14	Cantu	AV Yearbook 1	PRINAAVTC	1				GPHS, NSSH	9-12
	13008800	0V3021/22	Cantu	GDI Yearbook 2	GRAPHDI1	1				GPHS, NSSH	10-12
	13008900	0V3031/32	Cantu	GDI Yearbook 3	GRAPHDI2	1	Yes, 5.0	Adv	GRAPHDI1	GPHS, NSSH	11-12
	13008910	0V3041/42	Cantu	GDI Yearbook 4	GRDLAB2	2	Yes, 5.0	Adv	GRAPHDI1	GPHS, NSSH	12
	13008900	0V3101/02	Cantu	Graphic Design and Illustration 2	GRAPHDI2	1	Yes, 5.0	Adv	GRAPHDI1	GPHS	11-12
	13008910	0V3111/12	Cantu	Graphic Design and Illustration 2 & Lab	GRDLAB2	2	Yes, 5.0	Adv	GRAPHDI1	NSSH	11-12
	13009100	0V4001/02	Cantu	Commercial Photography 1	CPHOTO1	1				GPHS, NSSH	10-12
	13009200	0V4101/02	Cantu	Commercial Photography 2	CPHOTO2	1	Yes, 5.0	Adv		GPHS, NSSH	10-12
	13009300	0V5001/02	Cantu	Fashion Design 1	FASHDSN1	1				NSSH	10-12
	13009400	0V5101/02	Cantu	Fashion Design 2	FASHDSN2	1	Yes, 5.0	Adv	FASHDSN1	NSSH	10-12
	13009900	0V6400	Cantu	Professional Communication	PROFCOMM	0.5				NSSH	8-12
	13009950	0V6501/02	Cantu	Digital Audio Technology 1	DATECH1	1				NSSH	10-12
	13009960	0V6601/02	Cantu	Digital Audio Technology 2	DATECH2	1	Yes, 5.0	Adv	DATECH1	NSSH	10-12
	13009970	0V6701/02	Cantu	Video Game Design	VIDGD	1				NSSH	8-12
	N1300995	0V6721/22	Cantu	Adv. Video Game Programming	ADVVIDEOGP	1	Yes, 5.0	Adv		NSSH	10-12
	N1300994	0V6731/32	Cantu	Video Game Programming	VIDEOPR	1				NS9	9-12
	N1303425	0K1121/12	Cantu	Practicum in Video Game	PRACENT	2	Yes, 5.0	Adv		NSSH	11-12
	13008450	0V1301/02	Cantu	Practicum in Animation	PRACANI1	2	Yes, 5.0	Adv	ANIMAT2	NSSH	11-12
	13008700	0V2201/02	Cantu	Practicum in Audio/Video Production	PRACAVP1	2	Yes, 5.0	Adv	AVPLAB2	GPHS, NSSH	11-12
	13009000	0V3201/02	Cantu	Practicum in Graphic Design & Illustration	PRACGRD1	2	Yes, 5.0	Adv	GRAPHDI2 or GRDLAB2	NSSH	11-12
	13009250	0V4201/02	Cantu	Practicum in Commercial Photography	PRACCPH1	2	Yes, 5.0	Adv	CPHOTO1	GPHS, NSSH	11-12
	13009500	0V5201/02	Cantu	Practicum in Fashion Design	PRACFAS1	2	Yes, 5.0	Adv	FASHDSN2	NSSH	11-12
	N1303425	0K1121/22	Cantu	Practicum in Digital Audio	PRACENT	2	Yes, 5.0	Adv		NSSH	11-12

Green Highlighted - Limited Seating

ENDORS	PEIMS #	LOCAL COURSE #	CONTACT	PATHWAYS/COURSES	ABBREV	CREDITS	WEIGHTED GPA	ADVANCED CTE	PREREQUISITE	CAMPUS	GRADE
<i>BUSINESS, MARKETING, AND FINANCE</i>											
BUSINESS & INDUSTRY	13011200	OB0001/02	Jensen	Principles of Business, Marketing, and Finance	PRINBMF	1				GPHS, NS9, NS10	9-11
	13011400	OB1001/02	Jensen	Business Information Management 1	BUSIM1	1				ECHS, GPHS, NS10	9-12
	13011400	OB1051/52	Jensen	Business Information Management 1	BUSIM1	1				NSSH	11-12
	13011500	OB1101/02	Jensen	Business Information Management 2	BUSIM2	1	Yes, 5.0		BUSIM1	GPHS, NSSH	10-12
	13011600	OB2001/02	Jensen	Business English	BUSENGL	1			ENG 3	NSSH	12
	13011800	OB4000	Jensen	Global Business	GLOBBUS	.5		Adv		GPHS, NSSH	10-12
	13012000	OB6001	Jensen	Virtual Business	VIRTBUS	.5				GPHS, NSSH	10-12
	13016200	OF0001/02	Jensen	Money Matters	MONEYM	1				NSSH	9-12
	13016600	OF4001/02	Jensen	Accounting 1	ACCOUNT1	1				NSSH	10-12
	13016700	OF4101/02	Jensen	Accounting 2	ACCOUNT2	1 Math	Yes, 5.0	Adv	ACCOUNT1	NSSH	11-12
	13018000	OF5101/02	Jensen	Financial Mathematics	FINMATH	1 Math			ALG 1	ECHS, GPHS, NSSH	10-12
	13034200	OK0004	Jensen	Advertising	ADVERTIS	.5		Adv		NSSH	10-12
	13011101	OK1001/02	Jensen	Entrepreneurship 1	ENTREP	1				ECHS	10-12
	13034600	OK2000	Jensen	Sports and Entertainment Marketing	SPORTSEM	.5				NS9, NS10 NSSH	9-12
	13034650	OK2100	Jensen	Social Media Marketing	SMEDMKTG	.5		Adv		NS9, NS10, NSSH	10-12
	84900XXX	OR2001/12	Jensen	Career Preparation Training	LC CR&TE	0				NSSH	9-12
	13012100	OB7001/2	Jensen	Business Management	BUSMG1	1		Adv		GPHS, NSSH	11-12
	13011111	OK1101/02	Jensen	Practicum in Entrepreneurship	PRACENT	2	Yes, 5.0	Adv		NSSH	11-12
	13034805	OK3111/12	Jensen	Ext. Practicum in Marketing 1	EXPRMKT1	3	Yes, 5.0	Adv		NSSH	11-12
	13034815	OK3211/12	Jensen	Ext. Practicum in Marketing 1	EXPRMKT2	3	Yes, 5.0	Adv		NSSH	11-12
	12701111	9R2021/22	Jensen	Career Preparation 1, General	CAREERP1	2		Adv		NSSH	11-12
	12701112	9R0031/32	Jensen	Career Preparation 2	CAREERP2	2	Yes, 5.0	Adv		NSSH	11-12
<i>EDUCATION AND TRAINING</i>											
PUBLIC SERVICE	13014200	OD0001/02	Cantu	Principles of Education and Training	PRINEDTR	1				GPHS, NS9, NSSH	9-10
	13014300	OD1001/02	Cantu	Human Growth and Development	HUGRDEV	1				NSSH	10-12
	13014400	OD2001/02	Cantu	Instructional Practices in Education and Training	INPRAC	2	Yes, 5.0	Adv	1 Edu Course	GPHS, NSSH	11-12
	13014500	OD2101/02	Cantu	Practicum in Education and Training	PRACEDT1	2	Yes, 5.0	Adv	INPRAC	GPHS, NSSH	12
<i>ENGINEERING</i>											
B&I/STEM	13036200	OS0001/02	Jensen	Principles of Applied Engineering	PRAPPENG	1				GPHS, NS9	9-10
	13036500	OS2101/02	Jensen	Engineering Design and Presentation 1	ENGDSPR1	1		Adv	ALG 1	GPHS, NSSH	10-12
	13036600	OS2201/02	Jensen	Engineering Design and Presentation 2	ENGDSPR2	2	Yes, 5.0	Adv	ALG 1; GEOM	GPHS, NSSH	11-12
	13032900	OS2401/02	Jensen	Introduction to Aerospace	MANENGT1	1				NSSH	10-12
	13037200	OS2301/02	Jensen	Aerospace 1	SCIRD	1 Sci	Yes, 5.0	Adv	BIO; CHEM; or IPC	NSSH	11
	13037300	OS2311/12	Jensen	Aerospace 2	ENGDPRS	1 Sci	Yes, 5.0	Adv	ALG 1; GEO	NSSH	12
<i>HEALTH SCIENCE</i>											
PUBLIC SERVICE/STEM	13020200	OH0001/02	Cantu	Principles of Health Science	PRINHLSC	1				GPHS, NS9	9-10
	13020300	OH1001/02	Cantu	Medical Terminology	MEDTERM	1				GPHS, NS10, NSSH	10-11
	13020400	OH2001/02	Cantu	Health Science Theory	HLTHSCI	1	Yes, 5.0	Adv	BIO; 1 Crd Hlth Sci Cluster	GPHS, NSSH	11-12
	13020600	OH4001/02	Cantu	Anatomy and Physiology	ANATPHYS	1 Sci		Adv	BIO; CHEM, IPC or Physics	GPHS, NSSH	11-12
	13020700	OH5001/02	Cantu	Medical Microbiology	MICRO	1 Sci		Adv	BIO; CHEM & 1 Crd Hlth Sci Cluster	GPHS, NSSH	10-12
	13020500	OH1031/32	Cantu	Practicum in Health Science - Medical Assisting	PRACHLS1	2	Yes, 5.0	Adv	HLTHSCI; BIO	GPHS, NSSH	12
	13020410	OH2121/22	Cantu	Health Science Theory/Clinical	HLSClin	2	Yes, 5.0	Adv	BIO	GPHS, NSSH	11-12
	13020500	OH3101/02	Cantu	Practicum in Health Science - Dental	PRACHLS1	2	Yes, 5.0	Adv	HLTHSCI; BIO	GPHS, NSSH	12
	13020505	OH3211/12	Cantu	Practicum in Health Science - Medical Cooperative	EXPRHLS1	3	Yes, 5.0	Adv	HLTHSCI; BIO	GPHS, NSSH	12
	13020500	OH9221/22	Cantu	Practicum in Health Science - Patient Care Technician	PRACHLS1	2	Yes, 5.0	Adv	HLTHSCI; BIO	NSSH	12
	13020200	OH9001/02	Cantu	Athletic Trainer 1	PRINHLSC	1				GPHS, NS9	9-10
	13020410	OH9021/22	Cantu	Athletic Trainer 2	HLSClin	2	Yes, 5.0	Adv	BIO	GPHS, NSSH	10-12
	13020500	OH9031/32	Cantu	Athletic Trainer 3	PRACHLS1	2	Yes, 5.0	Adv	HLTHSCI; BIO	GPHS, NSSH	11-12
	13020510	OH9041/42	Cantu	Athletic Trainer 4	PRACHLS2	2	Yes, 5.0	Adv	HLTHSCI; BIO	GPHS, NSSH	12

Green Highlighted - Limited Seating

ENDORS	PEIMS #	LOCAL COURSE #	CONTACT	PATHWAYS/COURSES	ABBREV	CREDITS	WEIGHTED GPA	ADVANCED CTE	PREREQUISITE	CAMPUS	GRADE
<i>HOSPITALITY AND TOURISM</i>											
BUSINESS & INDUSTRY	13022550	OP2001/02	Cantu	Introduction to Culinary Arts	INCULART	1				GPHS, NSSH	9-10
	13022600	OP2101/02	Cantu	Culinary Arts	CULARTS	2				GPHS, NSSH	10-12
	13022650	OP2201/02	Cantu	Advanced Culinary Arts	ADCULART	2	Yes, 5.0	Adv	CULARTS	GPHS, NSSH	11-12
	13022700	OP2301/02	Cantu	Practicum in Culinary Arts	PRACCUL1	2	Yes, 5.0	Adv	CULARTS	GPHS	12

<i>HUMAN SERVICES</i>											
PUBLIC SERVICE	13024400	OU2000	Cantu	Interpersonal Studies	INTERSTU	.5				NSSH	10-12
	13024500	OU3000	Cantu	Lifetime Nutrition and Wellness	LNURTWEL	.5				NSSH	10-12
	13014300	OD1001/02	Cantu	Human Growth and Development	HUGRDEV	1				NSSH	10-12
	13024600	OU4001/02	Cantu	Counseling and Mental Health	COUNSMH	1		Adv		NSSH	10-12

<i>INFORMATION TECHNOLOGY</i>											
B&I/STEM	13027200	ON0001/02	Jensen	Principles of Information Technology	PRINIT	1				NSSH	9-10
	3580200	683551/2	Jensen	Computer Science 1	TACS1	1			ALG 1	NSSH	9-12
	13027300	ON1001/02	Jensen	Computer Maintenance	COMPMTN	1				NSSH	10-12
	A3580300	ON1021/22	Jensen	AP Computer Science, Principles	APCSPRIN	1	Yes, 5.0	Adv		NSSH	10-12
	A3580110	683601/02	Jensen	AP Computer Science, Math	APTACSAM	1 Math	Yes, 5.0	Adv		NSSH	11-12

<i>LAW AND PUBLIC SERVICE</i>											
PUBLIC SERVICE	13029200	OL0001/02	Jensen	Principles of Law, Public Safety, Corrections, and Security	PRINLPCS	1				GPHS, NS9	9-12
	13029300	OL1001/02	Jensen	Law Enforcement 1	LAWENF1	1				GPHS, NS10	10-12
	13029400	OL1101/02	Jensen	Law Enforcement 2	LAWENF2	1	Yes, 5.0	Adv		GPHS, NSSH	10-12
	13029550	OL2101/02	Jensen	Criminal Investigation	CRINVEST	1				NSSH	10-12
	13029700	OL3101/02	Jensen	Correctional Services	CORRSRVS	1		Adv		GPHS, NSSH	10-12
	13029500	OL2001/02	Jensen	Forensic Science	FORENSCI	1 Sci		Adv	BIO; CHEM, IPC, or Physics	GPHS, NSSH	11-12
	13030100	OL5001/02	Jensen	Practicum in Law, Public Safety, Corrections, and Security	PRACLPS1	2	Yes, 5.0	Adv		NSSH	11-12
	13030110	OL5101/02	Jensen	Practicum in Law, Public Safety, Corrections, and Security	PRACLPS2	2	Yes, 5.0	Adv		NSSH	11-12
	13030100	OL5501/02	Jensen	Law Academy 1 - Year 1	PRACLPS1	1	Yes, 5.0	Adv		NSSH	11
	13030100	OL5511/12	Jensen	Law Academy 2 - Year 2	PRACLPS1	1	Yes, 5.0	Adv		NSSH	12

<i>MANUFACTURING</i>											
B&I/STEM	13037000	OS5101/02	Jensen	Robotics 1	ROBOTIC1	1				GPHS, NSSH	9-10
B&I/STEM	13037050	OS5201/02	Jensen	Robotics 2	ROBOTIC2	1 Math	Yes, 5.0	Adv	ROBOTIC1	GPHS, NSSH	10-12
B&I	13032250	OM1001/02	Jensen	Introduction to Welding	INTRWELD	1				GPHS, NS9,	9-10
B&I	13032300	OM1101/02	Jensen	Welding 1	WELD1	2				GPHS, NSSH	10-12
B&I	13032400	OM1201/02	Jensen	Welding 2	WELD2	2	Yes, 5.0	Adv	WELD1	GPHS, NSSH	11-12
B&I/STEM	13033000	OS5401/02	Jensen	Practicum in Robotics	PRACMAN1	2	Yes, 5.0	Adv		GPHS, NSSH	12
B&I	13033000	OM1301/02	Jensen	Practicum in Manufacturing	PRACMAN1	2	Yes, 5.0	Adv		GPHS	12

<i>TRANSPORTATION, DISTRIBUTION, AND LOGISTICS</i>											
BUSINESS & INDUSTRY	13039260	OT1101/02	Cantu	Principles of Distribution and Logistics	PRINDILG	1				NSSH	9-12
	13039550	OT3001/02	Cantu	Automotive Basics	AUTOBASC	1				GPHS, NSSH	9-12
	13039600	OT3101/02	Cantu	Automotive Technology 1: Maintenance and Light Re	AUTOTEC1	2		Adv		GPHS, NSSH	9-12
	13039700	OT3201/02	Cantu	Automotive Technology 2: Automotive Service	AUTOTEC2	2	Yes, 5.0	Adv	AUTOTEC1	GPHS, NSSH	11-12
	13040200	OT8001/02	Cantu	Management of Transportation Systems	MNGTRSY	1				NSSH	9-12
	13040450	OT9101/02	Cantu	Practicum in Transportation Systems 1	PRACTRS1	2	Yes, 5.0	Adv		GPHS	12
	13040455	OT9111/12	Cantu	Ext. Practicum in Transportation Systems 1	EXPRTRS1	3	Yes, 5.0	Adv		GPHS, NSSH	11-12

Green Highlighted - Limited Seating

MIDDLE SCHOOL COURSES

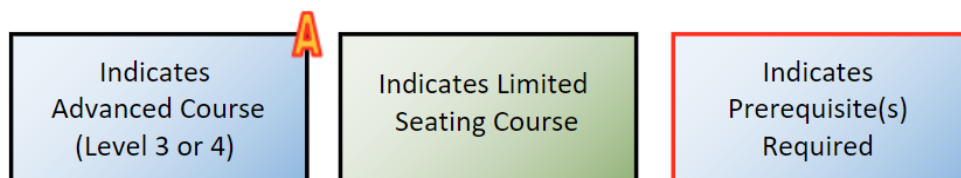
ENDORS	PEIMS #	LOCAL COURSE #	CONTACT	COURSE NAME	ABBREV	CREDITS	WEIGHTED GPA	ADVANCED	PREREQ	CAMPUS	GRADE
B&I	13008200	HS001/02	Cantu	Principles of Arts, Audio /Video Technology and Communications	PRINAAVTC	1				WAMS	7-8
STEM	13032200	HS0M01/02	Jensen	Principles of Manufacturing	PRINMAN	1				CMS, GPMS	7-8
B&I	13009970	HS0V6A/B	Cantu	Video Game Design	VIDGD	1				ALL	7-8
NONE	13011300	HS1600/01	Jensen	Touch System Data Entry	TSDATAE	.5				CMS, NSMS	7-8
PUBLIC SERVICE	13024200	HS4501/02	Cantu	Principles of Human Services	PRINHUSR	1				CMS, GPMS, NSMS	8
	N1302542	HS6121/22	Cantu	Think Tank	COMMSERV	1				ALL	7
	N1302542	HS6201/02	Cantu	Think Tank- Encounters	COMMSERV	1				ALL	7
	N1302542	HS6301/02	Cantu	Think Tank- SP	COMMSERV	1				CMS, NSMS	7
B&I	3580400	HS7501/02	Cantu	Digital Design and Media Production	TADGDMP	1				CMS, GPMS, NSMS	7-8
	3580500	HS7601/02	Cantu	Digital Art and Animation	TADGAA	1 Art		Adv	ART1	NSMS	8
	13009900	HS9151	Cantu	CCR	PROFCOMM	0.5				ALL	8
	13009900	HS9152	Cantu	CCR Resource	PROFCOMM	0.5				CMS, NSMS	8
	13009900	HS9191	Cantu	CCR Encounters	PROFCOMM	0.5				ALL	7-8
B&I/STEM	13036200	HSS001/02	Cantu	Principles of Applied Engineering	PRAPPENG	1				GPMS	8
NONE	82970TDS	MS0060	Jensen	Touch System Data Entry		0				GPMS, NSMS	7-8
	82990XXX	MS1771	Cantu	Think Tank MS		0				ALL	7
	83800XXX	MS4501	Cantu	Human Srvc MS		0				CMS, GPMS, NSMS	8
	12700110	MS7108	Jensen	Career and College Exploration (1st Time Taken)		0				CMS, GPMS, NSMS	7-8
	12700120	MS7109	Jensen	Career and College Exploration (2nd Time Taken)		0				GPMS	7-8
	838000ROB	MS7218	Jensen	Info Tech		0				GPMS	7-8
	83800XXX	MS9151	Jensen	CCR MS		0				ALL	8

Green Highlighted - Limited Seating

CTE PROGRAMS OF STUDY FRAMEWORKS & FLOWCHARTS

- Middle School Courses
- Agriculture, Food, & Natural Resources
- Architecture & Construction
- Arts, Audio Visual Technology, & Communications
- Business, Marketing, & Finance
- Education & Training
- Engineering
- Health Science
- Hospitality & Tourism
- Human Services
- Information Technology
- Law & Public Service
- Manufacturing
- Transportation, Distribution, & Logistics

Flowchart Key



MIDDLE SCHOOL CTE COURSES

FOR HIGH SCHOOL CREDIT

Digital Art & Animation
(1 credit)
8th

Digital Design & Media
Production
(1 credit)
7th-8th

Principles of Applied
Engineering
(1 credit)
7th-8th

Principles of Arts, A/V Tech,
& Communications
(1 credit)
7th-8th

Principles of Community
Services/Think Tank
(1 credit)
7th

Principles of Human
Services
(1 credit)
8th

Principles of Manufacturing
(1 credit)
7th-8th

Professional
Communications/CCR
(0.5 credit)
8th

Touch Systems Data Entry
(0.5 credit)
7th-8th

Video Game Design
(1 credit)
7th-8th

MIDDLE SCHOOL OPTIONS

Career & College Exploration -
1st Time Taken
(Year)
7th-8th

Career & College Exploration -
2nd Time Taken
(Year)
7th-8th

Information Technology
(1 Semester)
7th-8th



Agriculture, Food, and Natural Resources Career Cluster

The Agriculture, Food, and Natural Resources (AFNR) career cluster focuses on the essential elements of life, food, water, land, and air. This career cluster includes occupations ranging from farmer, rancher, and veterinarian to geologist, land conservationist, and florist.

Statewide Program of Study: Animal Science

The Animal Science program of study focuses on occupational and educational opportunities associated with the science, research, and business of animals and other living organisms. This program of study includes applying biology and life science to real-world life processes of animals and wildlife, either in laboratories or in the field, which could include a veterinary office, a farm or ranch, or any outdoor area harboring animal life. Students will research and analyze the growth and destruction of species and research or diagnose diseases and injuries of animals.



Secondary Courses for High School Credit

- | | |
|----------------|-----------------------------------------------------------------------------------------------------------------------------------------------------------------------------------------------|
| Level 1 | <ul style="list-style-type: none"> Principles of Agriculture, Food, & Natural Resources |
| Level 2 | <ul style="list-style-type: none"> Small Animal Management Equine Science Entrepreneurship 1 |
| Level 3 | <ul style="list-style-type: none"> Livestock Production |
| Level 4 | <ul style="list-style-type: none"> Advanced Animal Science Veterinary Medical Applications & Lab Practicum in Agriculture, Food, & Natural Resources |

Aligned Advanced Academic Courses

AP or IB	AP Biology
-----------------	------------

Students should be advised to consider these course opportunities to enrich their preparation. AP or IB courses not listed under the Secondary Courses for High School Credit section of this framework document do not count towards concentrator/completer status for this program of study.

Work-Based Learning and Expanded Learning Opportunities

Work-Based Learning Activities

- Shadow an animal scientist in a biology lab to learn about applying science to understand animals and wildlife
- Intern in a veterinary clinic, caring for animals and wildlife being treated in the clinic

Expanded Learning Opportunities

- Participate in an FFA career, leadership, and speaking contest like an agriscience fair
- Attend an agricultural industry seminar

Aligned Industry-Based Certifications

- Elanco Fundamentals of Animal Science Certification
- Elanco Veterinary Medical Applications Certification



Example Postsecondary Opportunities

Apprenticeships

- Reproduction Technician

Associate Degrees

- Biological and Physical Sciences
- Entomology

Bachelor's Degrees

- Animal Science
- Zoology/Animal Biology

Master's, Doctoral, and Professional Degrees

- Marine Sciences
- Biotechnology

Additional Stackable IBCs/License

- Veterinarian
- Certified Veterinary Technician



Example Aligned Occupations

Veterinary Assistants and Laboratory Animal Caretakers

Median Wage: \$29,906
Annual Openings: 1,348
10-Year Growth: 24%

Veterinary Technologists and Technicians

Median Wage: \$33,679
Annual Openings: 1,217
10-Year Growth: 24%

Veterinarian

Median Wage: \$103,160
Annual Openings: 347
10-Year Growth: 26%



Animal Science Program of Study

Principles of Agriculture, Food,
& Natural Resources
(1 Credit)
9th-12th

Small Animal
Management
(0.5 Credit)
10th-12th

Equine Science
(0.5 Credit)
10th-12th

Entrepreneurship 1
(1 Credit)
10th-12th

Livestock Production
(1 Credit)
10th-12th

Advanced Animal Science
(1 Science Credit)
11th-12th

Veterinary Medical Applications
(2 Credits)
11th-12th

Practicum in Agriculture,
Food, & Natural Resources
(2 Credits)
11th-12th

**Agriculture, Food, & Natural
Resources Cluster**
*Business & Industry
Endorsement*



Agriculture, Food, and Natural Resources Career Cluster

The Agriculture, Food, and Natural Resources (AFNR) career cluster focuses on the essential elements of life, food, water, land, and air. This career cluster includes occupations ranging from farmer, rancher, and veterinarian to geologist, land conservationist, and florist.

Statewide Program of Study: *Plant Science*

The Plant Science program of study focuses on occupational and educational opportunities associated with the science, research, and business of plants and other living organisms. This program of study includes the application of biology and life science to real-world life processes of plants and vegetation, either in laboratories or in the field.



Secondary Courses for High School Credit

- | | |
|----------------|------------------------------------------------------------------------------------------------------------|
| Level 1 | <ul style="list-style-type: none"> Principles of Agriculture, Food, & Natural Resources |
| Level 2 | <ul style="list-style-type: none"> Entrepreneurship 1 |
| Level 3 | <ul style="list-style-type: none"> Floral Design |
| Level 4 | <ul style="list-style-type: none"> Practicum in Agriculture, Food, & Natural Resources |

Aligned Advanced Academic Courses

AP

AP Biology
AP Chemistry
AP Environmental Science

Students should be advised to consider these course opportunities to enrich their preparation. AP or IB courses not listed under the Secondary Courses for High School Credit section of this framework document do not count towards concentrator/completer status for this program of study.

Work-Based Learning and Expanded Learning Opportunities

Work-Based Learning Activities

- Work in a part-time job at a landscaping company to learn about production and management of plants.
- Intern at an agricultural research company, working alongside a biological technician to learn about application of biology to plant production

Expanded Learning Opportunities

- Participate in an FFA career, leadership, and speaking contest like an agriscience fair
- Participate in an industry-related competition like an agriscience fair

Aligned Industry-Based Certifications

- Principles of Floral Design Certification



Successful completion of the Plant Science program of study will fulfill requirements of the Business and Industry endorsement.



Example Postsecondary Opportunities

Apprenticeships

- Horticulturist

Associate Degrees

- Biology/Biological Sciences
- Biological and Physical Sciences

Bachelor's Degrees

- Horticulture
- Plant Pathology/Phytopathology

Master's, Doctoral, and Professional Degrees

- Plant Breeding
- Botany/Plant Biology

Additional Stackable IBCs/License

- Nursery Floral License
- Horticulturist Certification



Example Aligned Occupations

Pesticide Handlers, Sprayers, and Applicators, Vegetation

Median Wage: \$46,153

Annual Openings: 205

10-Year Growth: 17%

Biological Technicians

Median Wage: \$45,787

Annual Openings: 879

10-Year Growth: 14%

Farmers, Ranchers, and Other Agricultural Managers

Median Wage: \$65,490

Annual Openings: 28,020

10-Year Growth: 4%

Data Source: TexasWages, Texas Workforce Commission. Retrieved 3/8/2024.



For more information visit:

<https://tea.texas.gov/academics/college-career-and-military-prep/career-and-technical-education/programs-of-study-additional-resources>

**Agriculture, Food, & Natural
Resources Cluster**
Business & Industry Endorsement

**Plant Science
Program of Study**

Principles of Agriculture, Food,
& Natural Resources
(1 Credit)
9th-12th

Entrepreneurship 1
(1 Credit)
9th-12th

Floral Design
(1 Credit)
9th-12th

Practicum in Agriculture, Food,
& Natural Resources
(2 Credits)
12th

A

A



Architecture and Construction Career Cluster

The Architecture and Construction career cluster focuses on designing, planning, managing, building, and maintaining the built environment. This career cluster includes occupations ranging from architect, carpenter, and construction manager to electrician, plumber and heating, air conditioning, and refrigeration technician.

Statewide Program of Study: *Architectural Drafting and Design*

The Architectural Drafting and Design program of study focuses on occupational and educational opportunities associated with developing, engineering, and designing building structures and facilities. This program of study includes reading, interpreting, and drawing blueprints for interior and exterior construction projects.



Secondary Courses for High School Credit

- | | |
|----------------|---------------------------------------------------------------------------------------------------------------------------|
| Level 1 | <ul style="list-style-type: none"> Principles of Architecture |
| Level 2 | <ul style="list-style-type: none"> Architectural Design 1 Interior Design 1 |
| Level 3 | <ul style="list-style-type: none"> Architectural Design 2 Interior Design 2 |
| Level 4 | <ul style="list-style-type: none"> Practicum in Architectural Design Practicum in Interior Design |



Example Postsecondary Opportunities

Apprenticeships

- Drafter

Associate Degrees

- CAD/CADD Drafting and/or Design Technology
- Drafting and Design Technology
- Surveying Technology/Surveying
- Architectural Drafting and Architectural CAD/CADD

Bachelor's Degrees

- Civil Engineering
- Construction Engineering
- Surveying Engineering
- Drafting and Design Technology

Master's, Doctoral, and Professional Degrees

- Civil Engineering
- Geographic Information Science and Cartography
- Construction Engineering Technology



Work-Based Learning and Expanded Learning Opportunities

Work-Based Learning Activities	<ul style="list-style-type: none"> Intern at an architectural firm to develop CADD drafting and design technology skills Shadow a civil engineer to learn more about their day-to-day responsibilities
Expanded Learning Opportunities	<ul style="list-style-type: none"> Conduct an informational interview with an architect to learn about their role and responsibilities Participate in SkillsUSA or TSA

Aligned Industry-Based Certifications

- Autodesk Associate (Certified User) Revit Architecture



Example Aligned Occupations

Architectural and Civil Drafters

Median Wage: \$57,424
Annual Openings: 1,366
10-Year Growth: 15%

Architects

Median Wage: \$80,903
Annual Openings: 966
10-Year Growth: 18%

Construction Managers

Median Wage: \$95,072
Annual Openings: 6,325
10-Year Growth: 24%



Successful completion of the Architectural Drafting and Design program of study will fulfill requirements of the Business and Industry endorsement.

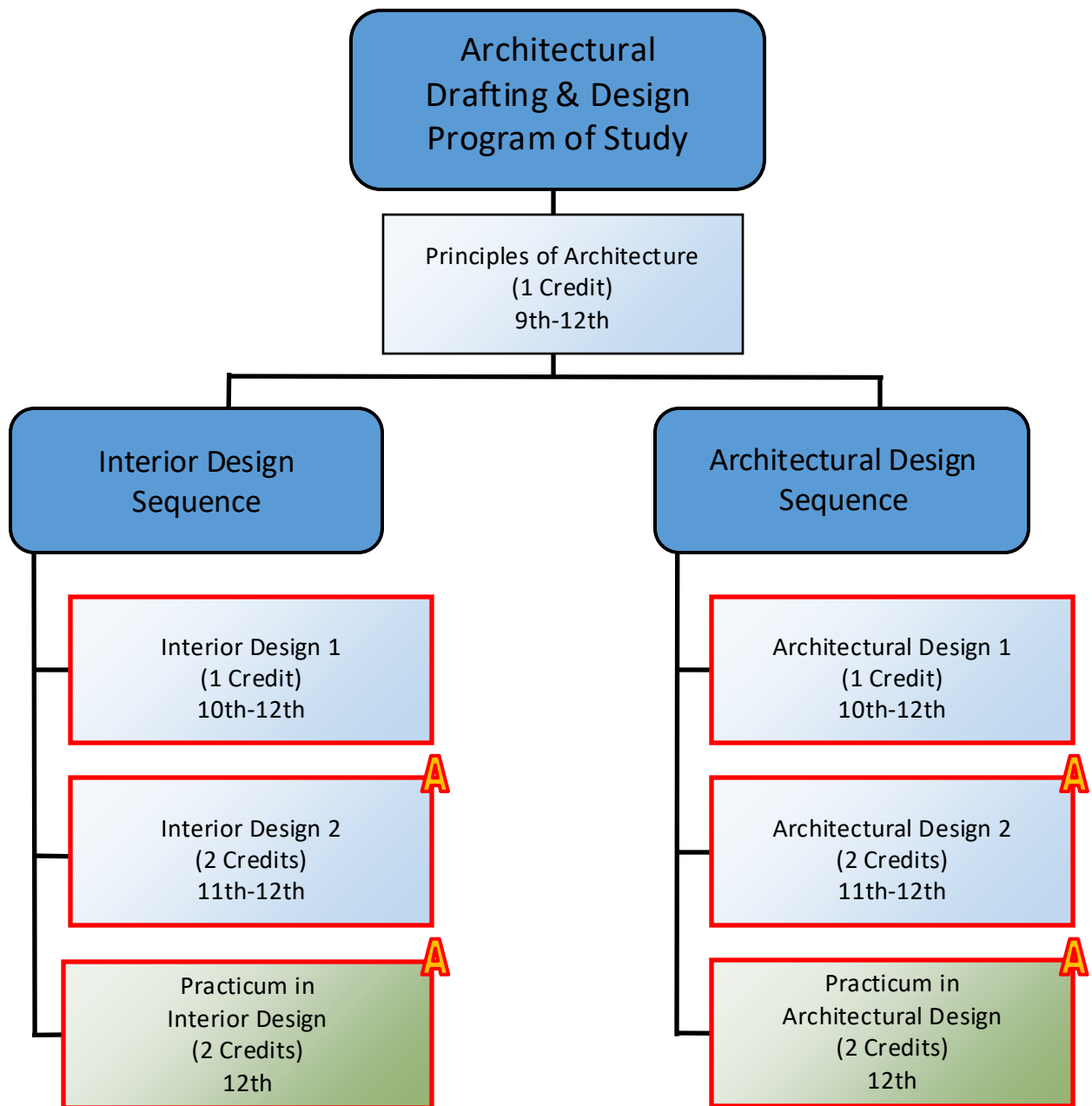
Data Source: TexasWages, Texas Workforce Commission. Retrieved 3/8/2024



For more information visit:
<https://tea.texas.gov/academics/college-career-and-military-prep/career-and-technical-education/programs-of-study-additional-resources>

Architecture & Construction Cluster

Business & Industry Endorsement



Arts, Audio Visual Technology, and Communication Career Cluster

The Arts, Audio Visual Technology, and Communication (AAVTC) career cluster focuses on designing, producing, exhibiting, performing, writing, and publishing multimedia content requiring creative aptitude, fluency in computer and technology applications, and proficiency in oral and written communication. This career cluster includes occupations ranging from camera operator, audio and video technician, director, and producer to graphic designer and web and digital interface designer.

Statewide Program of Study: *Digital Communications*

The Digital Communications program of study focuses on occupational and educational opportunities associated with the production of audio and visual media formats for various purposes, such as TV broadcasts, advertising, video production, or motion pictures. The program of study includes operating machines and equipment such as microphones, sound speakers, video screens, projectors, video monitors, sound and mixing boards, and related electronic equipment to record sound and images.



Secondary Courses for High School Credit

- | | |
|----------------|---------------------------------------------------------------------------------------------------------------------------------------------------------------------------------------------------------------------------------------|
| Level 1 | <ul style="list-style-type: none"> Principles of Arts, Audio/Video Technology, & Communications Professional Communications |
| Level 2 | <ul style="list-style-type: none"> Audio/Video Production 1 Audio/Video Production 1 & Lab Digital Audio Technology 1 Digital Design & Media Production Entrepreneurship 1 |
| Level 3 | <ul style="list-style-type: none"> Audio/Video Production 2 & Lab Digital Audio Technology 2 |
| Level 4 | <ul style="list-style-type: none"> Practicum in Audio/Video Production Practicum in Digital Audio Technology Practicum in Entrepreneurship |

Work-Based Learning and Expanded Learning Opportunities

Work-Based Learning Activities	<ul style="list-style-type: none"> Shadow a sound designer to learn how sound and foley are created for movies or podcasts Intern with a technical director at a sports team, recording studio, or radio station Shadow a technician on a live news broadcast, concert, or other event
Expanded Learning Opportunities	<ul style="list-style-type: none"> Participate in SkillsUSA or TSA Participate in Student Television Network Capture and edit film and audio for a podcast with a local community organization

Aligned Industry-Based Certifications

- Adobe Certified Professional in Digital Video Using Adobe Premiere Pro
- Adobe Certified Professional in Visual Design Using Adobe Photoshop



Successful completion of the Digital Communications program of study will fulfill requirements of the Business and Industry endorsement.



Example Postsecondary Opportunities

Apprenticeships

- Light Technician

Associate Degrees

- Commercial and Advertising Art
- Animation, Interactive Technology, Video Graphics, and Special Effects

Bachelor's Degrees

- Cinematography and Film/Video Production
- Recording Arts Technology

Master's, Doctoral, and Professional Degrees

- Animation, Interactive Technology, Video Graphics, and Special Effects
- Communications Technology

Additional Stackable IBCs/License

- CompTIA Digital Media and Entertainment Professional Certification (DMEP)



Example Aligned Occupations

Camera Operators, Television, Video, and Film

Median Wage: \$48,422
Annual Openings: 155
10-Year Growth: 20%

Audio and Video Technicians

Median Wage: \$46,319
Annual Openings: 626
10-Year Growth: 30%

Producers and Directors

Median Wage: \$65,029
Annual Openings: 522
10-Year Growth: 12%

Data Source: TexasWages, Texas Workforce Commission. Retrieved 3/8/2024.



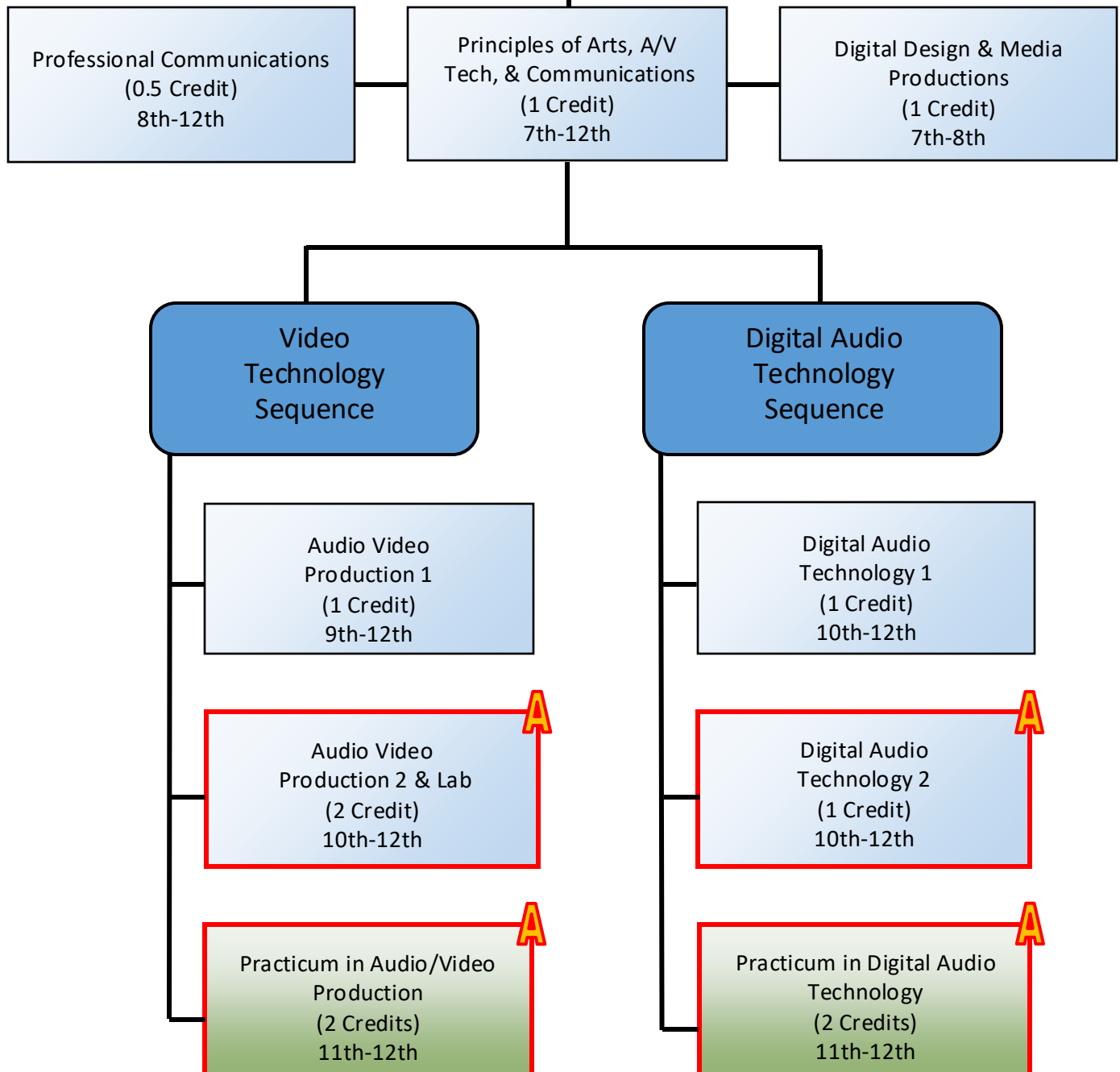
For more information visit:

<https://tea.texas.gov/academics/college-career-and-military-prep/career-and-technical-education/programs-of-study-additional-resources>

Arts, Audio Video Technology, & Communications Cluster

Business & Industry Endorsement

Digital Communications Program of Study



Arts, Audio Visual Technology, and Communication Career Cluster

The Arts, Audio Visual Technology, and Communication (AAVTC) career cluster focuses on designing, producing, exhibiting, performing, writing, and publishing multimedia content requiring creative aptitude, fluency in computer and technology applications, and proficiency in oral and written communication. This career cluster includes occupations ranging from camera operator, audio and video technician, director, and producer to graphic designer and web and digital interface designer.

Statewide Program of Study: *Graphic Design and Interactive Media*

The Graphic Design and Interactive Media program of study focuses on occupational and educational opportunities associated with designing or creating graphics to meet specific commercial or promotional needs, such as packaging, displays, or logos. The program of study includes designing clothing and accessories and creating special effects, animation, or other visual images using film, video, computers, or other electronic tools and media for use in computer games, movies, music videos, and commercials.

Secondary Courses for High School Credit

- | | |
|----------------|---------------------------------------------------------------------------------------------------------------------------------------------------------------------------------------------------------------------------------------------------------------------------------------------------------------------------------------------------------------------|
| Level 1 | <ul style="list-style-type: none"> Principles of Arts, Audio/Video Technology, & Communications Video Game Design Yearbook 1 (PRINAAVTC) |
| Level 2 | <ul style="list-style-type: none"> Graphic Design & Illustration 1 Animation 1 Commercial Photography 1 Fashion Design 1 Video Game Programming Digital Design & Media Productions Entrepreneurship 1 Yearbook 2 (GRAPHDI1) |
| Level 3 | <ul style="list-style-type: none"> Graphic Design & Illustration 2 Graphic Design & Illustration 2 & Lab Animation 2 Commercial Photography 2 Fashion Design 2 Advanced Video Game Design Digital Art & Animation Yearbook 3 (GRAPHDI2) Yearbook 4 (GRDLAB2) |
| Level 4 | <ul style="list-style-type: none"> Practicum in Graphic Design & Illustration Practicum in Animation Practicum in Commercial Photography Practicum in Fashion Design Practicum in Entrepreneurship |

Aligned Advanced Academic Courses

AP AP Studio Art: Two-Dimensional Design Portfolio

Students should be advised to consider these course opportunities to enrich their preparation. AP or IB courses not listed under the Secondary Courses for High School Credit section of this framework document do not count towards concentrator/completer status for this program of study.

Work-Based Learning and Expanded Learning Opportunities

Work-Based Learning Activities

- Shadow an art director at a branding firm or design agency
- Intern in the marketing and communications department of a technology company

Expanded Learning Opportunities

- Participate in SkillsUSA or TSA
- Participate in Student Television Network
- Join a related co-curricular or extracurricular club such as web development or computer coding

Aligned Industry-Based Certifications

- Adobe Certified Professional in Digital Video Using Adobe Premiere Pro
- Adobe Certified Professional in Graphic Design and Illustration using Illustrator
- Adobe Certified Professional in Visual Design Using Adobe Photoshop



Example Postsecondary Opportunities

Associate Degrees

- Graphic Design
- Digital Arts

Bachelor's Degrees

- Web Page, Digital/Multimedia and Information Resources Design
- Design and Visual Communications

Master's, Doctoral, and Professional Degrees

- Game and Interactive Media Design
- Animation, Interactive Technology, Video Graphics, and Special Effects

Additional Stackable IBCs/License

- Certified Textile Designer (CTD)



Example Aligned Occupations

Software Developers

Median Wage: \$111,705
Annual Openings: 15,324
10-Year Growth: 36%

Graphic Designers

Median Wage: \$50,973
Annual Openings: 1,766
10-Year Growth: 10%

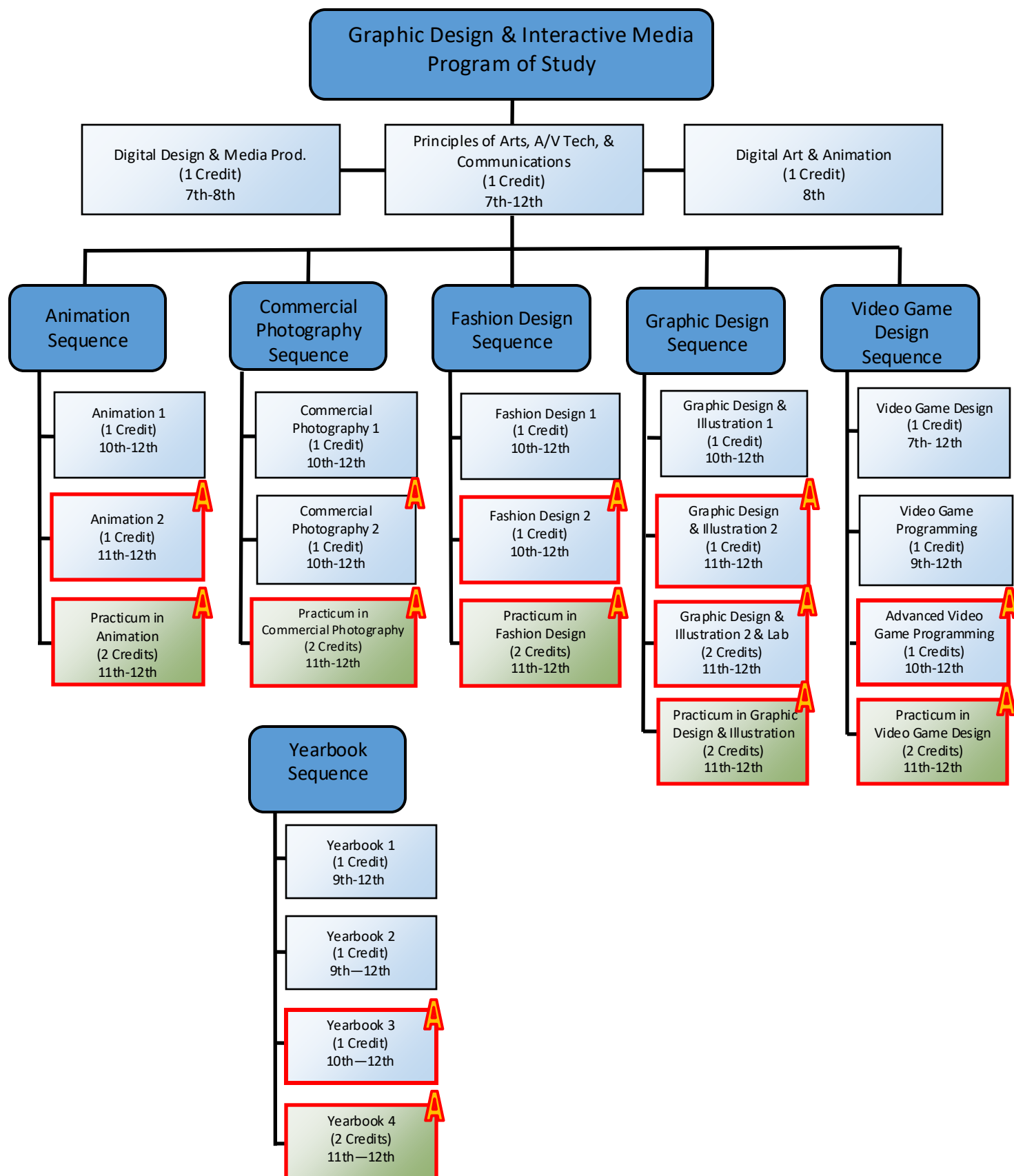
Art Directors

Median Wage: \$81,926
Annual Openings: 619
10-Year Growth: 18%



Arts, Audio Video Technology, & Communications Cluster

Business & Industry Endorsement





Business, Marketing, and Finance Career Cluster

The Business, Marketing, and Finance career cluster focuses on careers in planning, organizing, directing, and evaluating business functions essential to efficient and productive business operations. This career cluster includes occupations ranging from business owner and entrepreneur to accountant, retail manager, and market analyst.

Statewide Program of Study: *Accounting and Financial Services*

The Accounting and Financial Services program of study focuses on occupational and educational opportunities associated with examining, analyzing, and interpreting financial records. It includes exploration of financial services, preparing financial statements, auditing financial statements prepared by others, and interpreting accounting records. This program of study also introduces students to mathematical modeling tools.



Secondary Courses for High School Credit

- | | |
|----------------|----------------------------------------------------------------------------------------------------------------------------------------------------------------------|
| Level 1 | <ul style="list-style-type: none"> Principles of Business, Marketing, & Finance Business Information Management 1 Money Matters |
| Level 2 | <ul style="list-style-type: none"> Accounting 1 Financial Mathematics Entrepreneurship 1 |
| Level 3 | <ul style="list-style-type: none"> Accounting 2 |



Example Postsecondary Opportunities

Associate Degrees

- Accounting
- Bookkeeping

Bachelor's Degrees

- Accounting
- Banking and Financial Support Services

Master's, Doctoral, and Professional Degrees

- Business Administration and Management
- Finance

Additional Stackable IBCs/License

- Project Management Professional
- Property Tax Consultants Service Contract Providers



Work-Based Learning and Expanded Learning Opportunities

Work-Based Learning Activities	<ul style="list-style-type: none"> Intern with a certified public accountant (CPA) at a local business Intern with a city or county auditor's office Shadow a financial advisor as an intern at an investment company
Expanded Learning Opportunities	<ul style="list-style-type: none"> Participate in BPA, DECA, or FBLA Explore student membership in professional organizations such as AICPA, CIMA, or TXCPA

Aligned Industry-Based Certifications

- Accounting-Basic
- Microsoft Office Specialist: Microsoft Excel Expert (Excel 2019)



Successful completion of the Accounting and Financial Services program of study will fulfill requirements of the Business and Industry endorsement.



Example Aligned Occupations

Tax Preparers

Median Wage: \$56,956
Annual Openings: 898
10-Year Growth: 14%

Accountants and Auditors

Median Wage: \$78,022
Annual Openings: 12,989
10-Year Growth: 20%

Personal Financial Advisors

Median Wage: \$77,605
Annual Openings: 1,877
10-Year Growth: 21%

Data Source: TexasWages, Texas Workforce Commission. Retrieved 3/8/2024..



For more information visit:

<https://tea.texas.gov/academics/college-career-and-military-prep/career-and-technical-education/programs-of-study-additional-resources>

Business, Marketing, & Finance Cluster

Business & Industry Endorsement

Accounting & Financial Services Program of Study

Principles of Business,
Marketing, & Finance
(1 Credit)
9th-11th

Money Matters
(1 Credit)
9th-12th

Business Information
Management 1
(1 Credit)
9th-12th

Entrepreneurship 1
(1 Credit)
9th-12th

Accounting 1
(1 Credit)
10th-12th

Financial Math
(1 Credit)
11th-12th

Accounting 2
(1 Credit)
11th-12th

A



Business, Marketing, and Finance Career Cluster

The Business, Marketing, and Finance career cluster focuses on careers in planning, organizing, directing, and evaluating business functions essential to efficient and productive business operations. This career cluster includes occupations ranging from business owner and entrepreneur to accountant, retail manager, and market analyst.

Statewide Program of Study: **Business Management**

The Business Management program of study focuses on occupational and educational opportunities associated with planning, directing, and coordinating the administrative services and operations of an organization. It includes formulating policies, managing daily operations, and allocating the use of materials and human resources. This program of study also introduces students to mathematical modeling tools and organizational evaluation methods.



Secondary Courses for High School Credit

- | | |
|----------------|-----------------------------------------------------------------------------------------------------------------------------------------------|
| Level 1 | <ul style="list-style-type: none"> Principles of Business, Marketing, & Finance Business Information Management 1 |
| Level 2 | <ul style="list-style-type: none"> Virtual Business Business Information Management 2 Entrepreneurship 1 |
| Level 3 | <ul style="list-style-type: none"> Business Management Global Business |

Aligned Advanced Academic Courses

AP	AP Statistics
-----------	---------------

Students should be advised to consider these course opportunities to enrich their preparation. AP or IB courses not listed under the Secondary Courses for High School Credit section of this framework document do not count towards concentrator/completer status for this program of study.

Work-Based Learning and Expanded Learning Opportunities

Work-Based Learning Activities

- Intern at local business in the HR department
- Shadow the COO of a local business or chamber of commerce

Expanded Learning Opportunities

- Participate in BPA, DECA, FBLA, or related UIL events
- Explore student membership in related professional organizations

Aligned Industry-Based Certifications

- Entrepreneurship & Small Business
- Microsoft Office Specialist: Microsoft Excel Expert (Excel 2019)
- Microsoft Office Specialist: Microsoft Word Expert (Word 2019)
- Stukent Social Media Marketing Certification



Example Postsecondary Opportunities

Associate Degrees

- Business Administration and Management
- Human Resources Management

Bachelor's Degrees

- Business Analytics
- Accounting and Business

Master's, Doctoral, and Professional Degrees

- Business Administration and Management
- Organizational Leadership

Additional Stackable IBCs/License

- Professional Certificate in Team Leadership
- Property Tax Professionals



Example Aligned Occupations

First-Line Supervisors of Administrative Support Workers

Median Wage: \$59,585
Annual Openings: 13,885
10-Year Growth: 9%

Human Resources Specialists

Median Wage: \$61,278
Annual Openings: 6,239
10-Year Growth: 23%

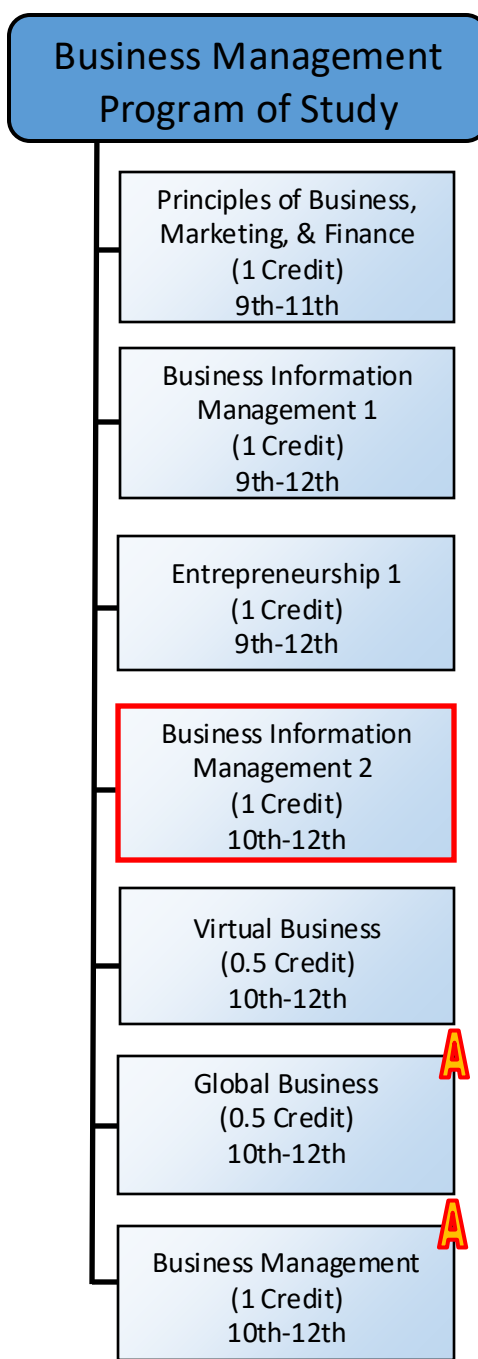
General and Operations Managers

Median Wage: \$83,220
Annual Openings: 25,450
10-Year Growth: 23%



Business, Marketing, & Finance Cluster

Business & Industry Endorsement





Business, Marketing, and Finance Career Cluster

The Business, Marketing, and Finance career cluster focuses on careers in planning, organizing, directing, and evaluating business functions essential to efficient and productive business operations. This career cluster includes occupations ranging from business owner and entrepreneur to accountant, retail manager, and market analyst.

Statewide Program of Study: **Marketing and Sales**

The Marketing and Sales program of study focuses on occupational and educational opportunities associated with collecting information to estimate potential sales of a product or service and create campaigns to market or distribute goods and services. It includes applying data related to customer demographics, preferences, needs, and buying habits.



Secondary Courses for High School Credit

- | | |
|----------------|---------------------------------------------------------------------------------------------------------------------------------------------------------------------------------------------|
| Level 1 | <ul style="list-style-type: none"> Principles of Business, Marketing, & Finance |
| Level 2 | <ul style="list-style-type: none"> Sports & Entertainment Marketing Virtual Business Digital Design & Media Production Entrepreneurship 1 |
| Level 3 | <ul style="list-style-type: none"> Advertising Social Media Marketing |
| Level 4 | <ul style="list-style-type: none"> Extended Practicum in Marketing |

Aligned Advanced Academic Courses

AP	AP Statistics
----	---------------

Students should be advised to consider these course opportunities to enrich their preparation. AP or IB courses not listed under the Secondary Courses for High School Credit section of this framework document do not count towards concentrator/completer status for this program of study.

Work-Based Learning and Expanded Learning Opportunities

- | | |
|----------------------------------------|-----------------------------------------------------------------------------------------------------------------------------------------------------------------------------------------------------|
| Work-Based Learning Activities | <ul style="list-style-type: none"> Intern at a marketing and advertising company Job shadow a pharmaceutical sales representative Intern at a local retail company |
| Expanded Learning Opportunities | <ul style="list-style-type: none"> Job shadow an account representative at a marketing firm Participate in BPA, DECA, FBLA, or related UIL events |

Aligned Industry-Based Certifications

- Entrepreneurship & Small Business
- Stukent Social Media Marketing Certification



Successful completion of the Marketing and Sales program of study will fulfill requirements of the Business and Industry endorsement.



Example Postsecondary Opportunities

Associate Degrees

- Marketing/Marketing Management
- Retail Management

Bachelor's Degrees

- Business Administration
- Marketing/Marketing Management
- Fashion Merchandising

Master's, Doctoral, and Professional Degrees

- Business Administration
- Applied Economics
- Business Analytics

Additional Stackable IBCs/License

- Salesforce
- Service Contract Providers



Example Aligned Occupations

Retail Salespersons

Median Wage: \$28,356
Annual Openings: 56,132
10-Year Growth: 15%

Market Research Analysts

Median Wage: \$60,926
Annual Openings: 5,688
10-Year Growth: 35%

Sales Managers

Median Wage: \$123,729
Annual Openings: 3,368
10-Year Growth: 21%

Data Source: TexasWages, Texas Workforce Commission. Retrieved 3/8/2024.

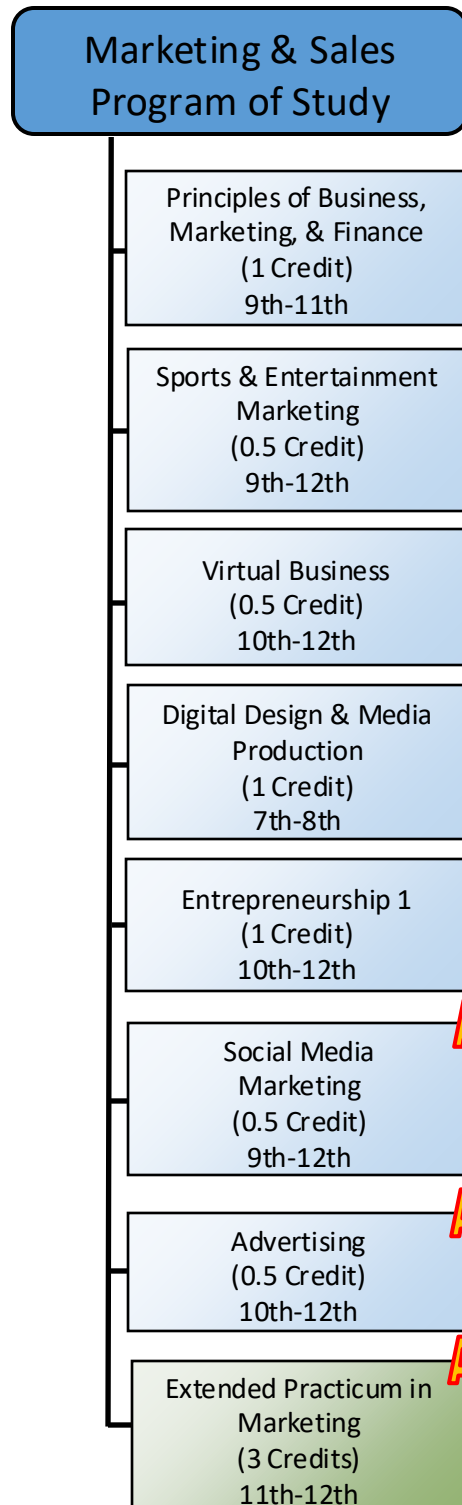


For more information visit:

<https://tea.texas.gov/academics/college-career-and-military-prep/career-and-technical-education/programs-of-study-additional-resources>

Business, Marketing, & Finance Cluster

Business & Industry Endorsement





Education and Training Career Cluster

The Education and Training career cluster focuses on planning, managing, and providing education and training services and related learning support services. All parts of courses are designed to introduce learners to the various careers available within the Education and Training career cluster. This career cluster includes a diverse spectrum of occupations, ranging from teaching assistant, classroom teacher, to school administrator.

Statewide Program of Study: Teaching and Training

The Teaching and Training program of study focuses on occupational and educational opportunities associated with careers related to teaching, instructing, and creating instructional and enrichment materials. The program of study includes recognizing a variety of student groups and their corresponding needs, identifying processes for developing curriculum and coordinating educational content, and coaching groups and individuals.



Secondary Courses for High School Credit

- | | |
|----------------|--------------------------------------------------------------------------------------------------------------------------------|
| Level 1 | <ul style="list-style-type: none"> Principles of Education & Training Principles of Human Services |
| Level 2 | <ul style="list-style-type: none"> Human Growth & Development |
| Level 3 | <ul style="list-style-type: none"> Instructional Practices |
| Level 4 | <ul style="list-style-type: none"> Practicum in Education & Training |



Example Postsecondary Opportunities

Apprenticeships

- Teacher Apprentice

Associate Degrees

- Adult and Continuing Education and Teaching
- Educational/Instructional Technology

Bachelor's Degrees

- Elementary Education and Teaching
- Secondary Education and Teaching

Master's, Doctoral, and Professional Degrees

- Educational Leadership and Administration, General
- Curriculum and Instruction

Additional Stackable IBCs/License

- Generalist, Grades EC-4



Work-Based Learning and Expanded Learning Opportunities

Work-Based Learning Activities

- Serve as a camp counselor to learn mentoring, facilitation, and lesson planning skills
- Volunteer in a tutoring center to learn lesson planning and skills assessment

Expanded Learning Opportunities

- Participate in FCCLA
- Participate in TAFE

Aligned Industry-Based Certifications

- Educational Aide I



Example Aligned Occupations

Teaching Assistants, Except Postsecondary

Median Wage: \$28,066
Annual Openings: 10,000
10-Year Growth: 15%

Secondary School Teachers, Except Special Education and CTE

Median Wage: \$61,035
Annual Openings: 8,288
10-Year Growth: 14%

Education Administrators, Kindergarten through Secondary

Median Wage: \$81,976
Annual Openings: 2,676
10-Year Growth: 14%



Successful completion of the Teaching and Training program of study will fulfill requirements of the Public Service endorsement.

Data Source: TexasWages, Texas Workforce Commission. Retrieved 3/8/2024.

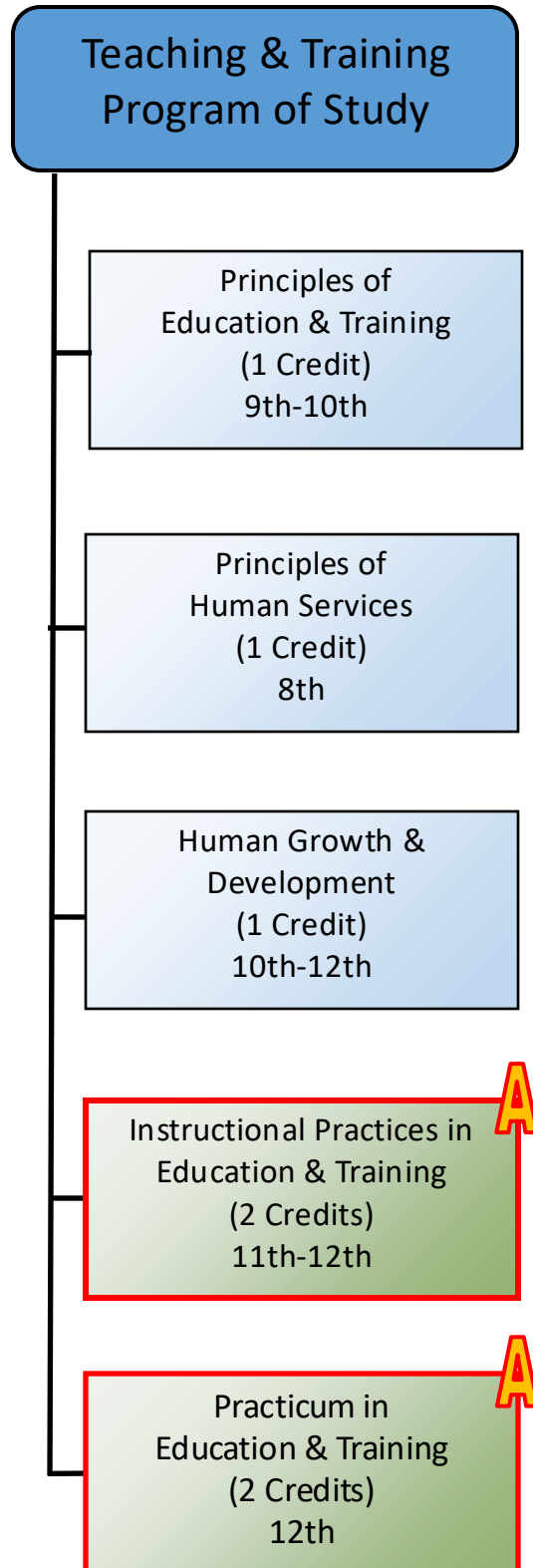


For more information visit:

<https://tea.texas.gov/academics/college-career-and-military-prep/career-and-technical-education/programs-of-study-additional-resources>

Education & Training Cluster

Public Service Endorsement



Engineering Career Cluster

The Engineering career cluster focuses on planning, designing, testing, building, and maintaining of machines, structures, materials, systems, and processes using empirical evidence and science, technology, and math principles. This career cluster includes occupations ranging from mechanical engineer and drafter to electrical engineer and to mapping technician.

Statewide Program of Study: Engineering Foundations

The Engineering Foundations program of study focuses on occupational and educational opportunities associated with a wide range of skills applied in the Engineering industry. Students will design, test, and evaluate projects related to engines, machines, and structures. This program of study includes applying scientific, mathematical, and empirical evidence to solve problems through innovation, design, construction, operation, and maintenance of different engineering systems.



Secondary Courses for High School Credit

- | | |
|----------------|-----------------------------------------------------------------------------------------------------------------------------------------------------------------------------------|
| Level 1 | <ul style="list-style-type: none"> Principles of Applied Engineering |
| Level 2 | <ul style="list-style-type: none"> Introduction to Aerospace (MANENG1) Robotics 1 |
| Level 3 | <ul style="list-style-type: none"> Engineering Design & Presentation 1 Robotics 2 |
| Level 4 | <ul style="list-style-type: none"> Engineering Design & Presentation 2 Aerospace 1 (SCIRD) Aerospace 2 (ENG DPRS) Practicum in STEM |

Aligned Advanced Academic Courses

AP

AP Calculus AB
AP Computer Science A
AP Physics 1
AP Statistics

Students should be advised to consider these course opportunities to enrich their preparation. AP or IB courses not listed under the Secondary Courses for High School Credit section of this framework document do not count towards concentrator/completer status for this program of study.

Work-Based Learning and Expanded Learning Opportunities

Work-Based Learning Activities

- Intern at an engineering, robotics, or aerospace company.
- Visit an engineering firm and shadow multiple types of engineers.

Expanded Learning Opportunities

- Participate in SkillsUSA or TSA
- Join a local engineering association and attend meetings.

Aligned Industry-Based Certifications

- Autodesk Associate (Certified User) Inventor for Mechanical Design



Successful completion of the Engineering Foundations program of study will fulfill requirements of the Business and Industry endorsement or the STEM endorsement if the math and science requirements are met.



Example Postsecondary Opportunities

Apprenticeships

- Industrial Engineering Technician Apprenticeship

Associate Degrees

- Manufacturing Engineering Technology/Technician
- Robotics Technology/Technician

Bachelor's Degrees

- Electrical and Electronics Engineering
- Engineering, General

Master's, Doctoral, and Professional Degrees

- Electrical and Electronics Engineering
- Engineering, General

Additional Stackable IBCs/Licensures

- Professional Engineer (PE License)
- Engineer in Training Certification (EIT)



Example Aligned Occupations

Civil Engineering Technologists and Technicians

Median Wage: \$61,138

Annual Openings: 765

10-Year Growth: 11%

Aerospace Engineers

Median Wage: \$115,694

Annual Openings: 483

10-Year Growth: 18%

Mechanical Engineers

Median Wage: \$99,937

Annual Openings: 1,755

10-Year Growth: 19%

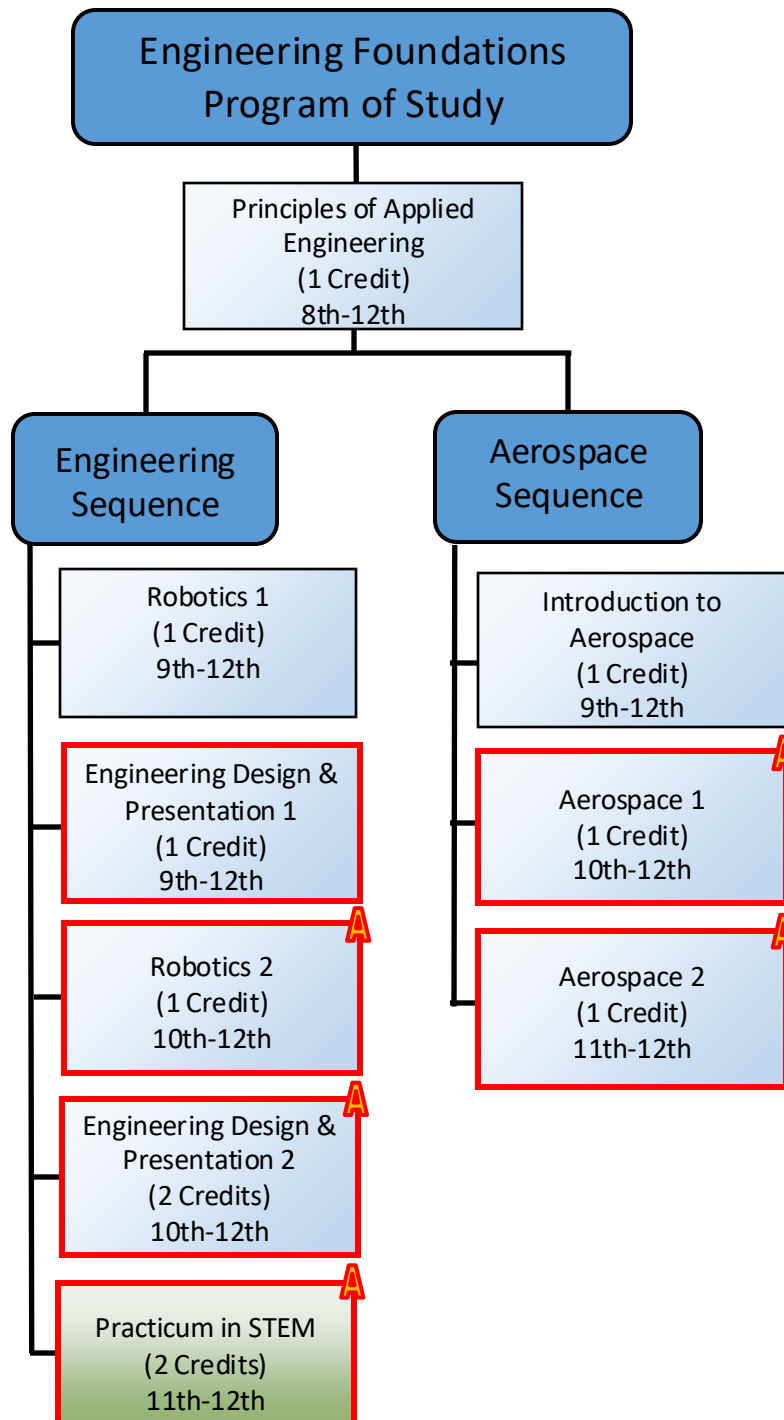
Data Source: TexasWages, Texas Workforce Commission. Retrieved 3/8/2024.



For more information visit:

<https://tea.texas.gov/academics/college-career-and-military-prep/career-and-technical-education/programs-of-study-additional-resources>

Engineering Cluster
B&I Endorsement
Also Satisfies STEM Endorsement





Health Science Career Cluster

The Health Science career cluster focuses on planning, managing, and providing therapeutic services, diagnostics services, health informatics, support services, and biotechnology research and development. This career cluster includes occupations ranging from medical assistant, registered nurse, and physical therapist to forensic science technician and athletic trainer.

Statewide Program of Study: *Diagnostic and Therapeutic Services*

The Diagnostic and Therapeutic Services program of study focuses on occupational and educational opportunities associated with diagnosing and treating acute, episodic, or chronic illness independently or as part of a healthcare team. This program of study includes exploration of patient treatment and rehabilitative programs that help build or restore daily living skills to persons with disabilities or developmental delays.



Secondary Courses for High School Credit

- | | |
|----------------|--------------------------------------------------------------------------------------------------------------------------------------------------------------------------------------------------------------------------------------------------------------------------------------------------------------|
| Level 1 | <ul style="list-style-type: none"> Principles of Health Science Athletic Trainer 1 (PRINHLSC) |
| Level 2 | <ul style="list-style-type: none"> Medical Terminology |
| Level 3 | <ul style="list-style-type: none"> Anatomy & Physiology Medical Microbiology Health Science Theory Health Science Theory (Clinicals) Athletic Trainer 2 (HLSCLIN) |
| Level 4 | <ul style="list-style-type: none"> Practicum in Health Science <ul style="list-style-type: none"> -Medical Assisting -Dental Assisting -Patient Care Technician Athletic Trainer 3 (PRACHLS1) Athletic Trainer 4 (PRACHLS2) |

Aligned Advanced Academic Courses

AP	AP Biology AP Chemistry
Dual Credit	Health Science Medical Assisting Certificate of Technology Pharmacy Technician Certificate of Technology

Students should be advised to consider these course opportunities to enrich their preparation. AP or IB courses not listed under the Secondary Courses for High School Credit section of this framework document do not count towards concentrator/completer status for this program of study.

Work-Based Learning and Expanded Learning Opportunities

Work-Based Learning Activities	<ul style="list-style-type: none"> Intern with a medical assistant at a community clinic, hospital, assisted living, or long-term care facility Participate in job shadowing experiences such as Emergency Medical Services (EMS) ride along or hospital/clinical job
Expanded Learning Opportunities	<ul style="list-style-type: none"> Participate in Health Occupation Students of America (HOSA) or SkillsUSA Participate in Advanced Medical Ambulance Bus (AMBUS) event or Community Emergency Response Team (CERT) event

Aligned Industry-Based Certifications

- Certified Clinical Medical Assistant
- Patient Care Technician
- Registered Dental Assistant X-Ray Certification



Example Postsecondary Opportunities

Apprenticeships

- Medical Assistant

Associate Degrees

- Emergency Medical Technology
- Radiologic Technology/Science

Bachelor's Degrees

- Emergency Medical Technology
- Medical Insurance Coding

Master's, Doctoral, and Professional Degrees

- Medicine
- Occupational Therapy

Additional Stackable IBCs/License

- Registered Diagnostic Medical Sonographer



Example Aligned Occupations

Medical Assistants

Median Wage: \$36,834
Annual Openings: 11,638
10-Year Growth: 29%

Dental Hygienists

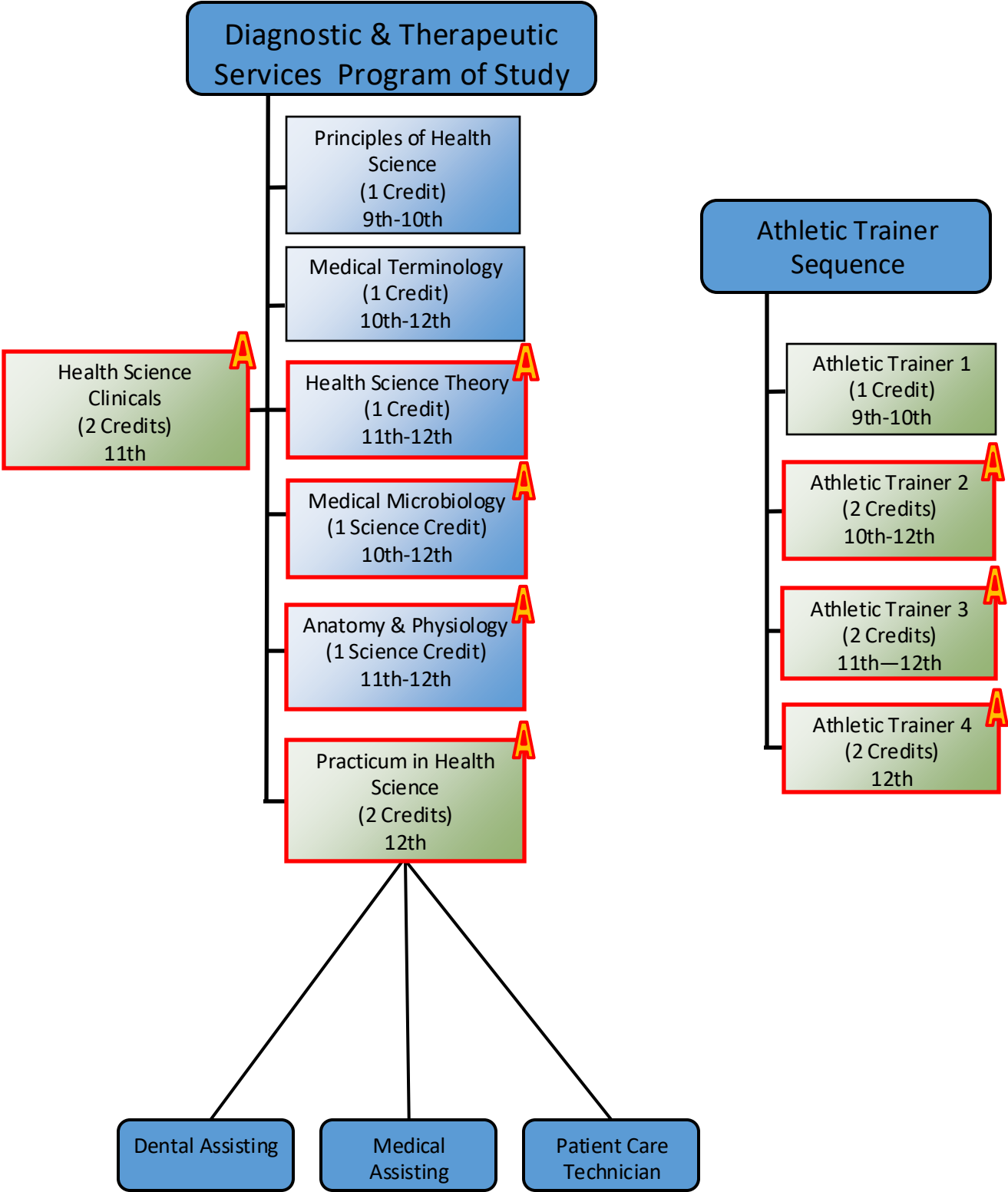
Median Wage: \$79,663
Annual Openings: 1,352
10-Year Growth: 32%

Physician Assistants

Median Wage: \$127,332
Annual Openings: 974
10-Year Growth: 41%



Health Science Cluster
Public Service Endorsement
Also Satisfies STEM Endorsement





Hospitality and Tourism Career Cluster

The Hospitality and Tourism career cluster focuses on the management, marketing, and operations of restaurants, lodging, attractions, recreation events, and travel-related services. This career cluster includes occupations ranging from reservation and transportation ticket agent to event planner and general manager.

Statewide Program of Study: Culinary Arts

The Culinary Arts program of study focuses on occupational and educational opportunities associated with the planning, directing, or coordinating activities of a food and beverage organization or department. This program of study includes opportunities involved in directing and participating in the preparation of food.



Secondary Courses for High School Credit

- | | |
|----------------|-----------------------------------------|
| Level 1 | • Introduction to Culinary Arts |
| Level 2 | • Culinary Arts
• Entrepreneurship 1 |
| Level 3 | • Advanced Culinary Arts |
| Level 4 | • Practicum in Culinary Arts |

Aligned Advanced Academic Courses

AP	AP Chemistry
-----------	--------------

Students should be advised to consider these course opportunities to enrich their preparation. AP or IB courses not listed under the Secondary Courses for High School Credit section of this framework document do not count towards concentrator/completer status for this program of study.

Work-Based Learning and Expanded Learning Opportunities

- | | |
|----------------------------------------|---------------------------------------------------------------------------------------------------------------------------------------------------------------------------------------------------------------------------------------------------------------------------------------------------------|
| Work-Based Learning Activities | <ul style="list-style-type: none"> Shadow a director of a non-profit that produces and delivers food for communities in need Intern at a catering company and learn about food production for large-scale events Work part-time in a restaurant as a line cook or chef |
| Expanded Learning Opportunities | <ul style="list-style-type: none"> Participate in FCCLA Participate in SkillsUSA Participate in American Culinary Association or the Texas Restaurant Association |

Aligned Industry-Based Certifications

- ServSafe Manager



Successful completion of the Culinary Arts program of study will fulfill requirements of the Business and Industry endorsement.



Example Postsecondary Opportunities

Associate Degrees

- Culinary Arts
- Baking and Pastry Arts

Bachelor's Degrees

- Hotel/Motel Administration/Management
- Culinary Science

Master's, Doctoral, and Professional Degrees

- Organizational Leadership
- Foodservice Systems Administration/Management

Additional Stackable IBCs/License

- Food Manager License



Example Aligned Occupations

Bakers

Median Wage: \$29,466
Annual Openings: 2,942
10-Year Growth: 26%

Chefs and Head Cooks

Median Wage: \$44,761
Annual Openings: 950
10-Year Growth: 37%

General and Operations Managers

Median Wage: \$83,220
Annual Openings: 25,450
10-Year Growth: 23%

Data Source: TexasWages, Texas Workforce Commission. Retrieved 3/8/2024.

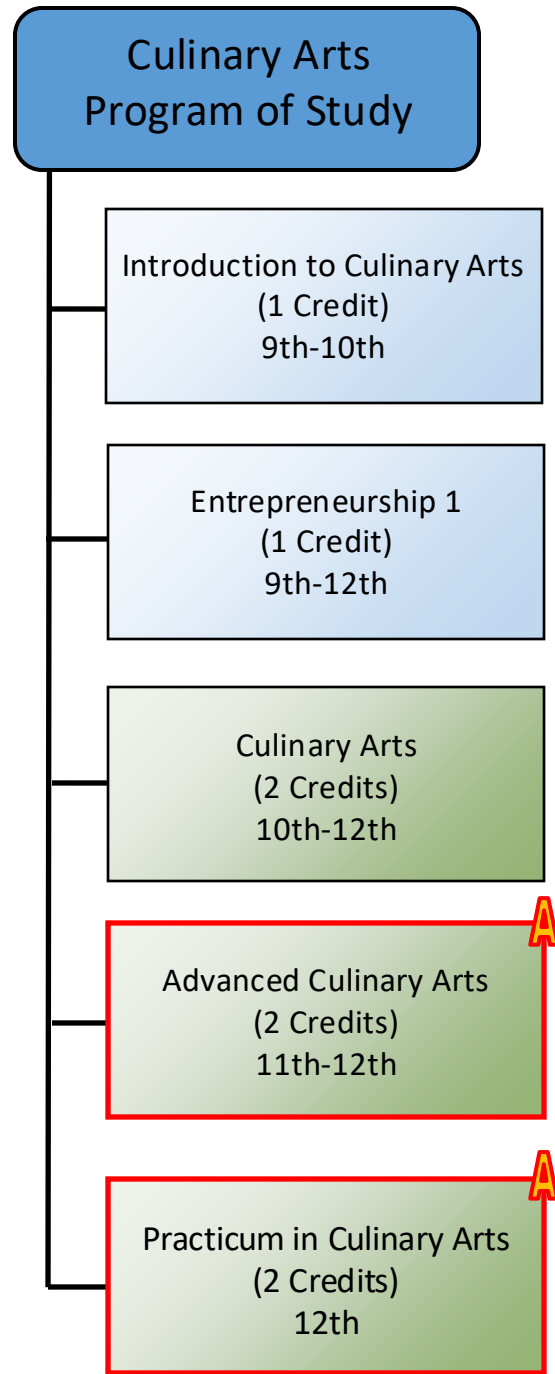


For more information visit:

<https://tea.texas.gov/academics/college-career-and-military-prep/career-and-technical-education/programs-of-study-additional-resources>

Hospitality & Tourism Cluster

Business and Industry Endorsement





Human Services Career Cluster

The Human Services career cluster focuses on preparing individuals for employment in career pathways that relate to families and human needs, such as counseling and mental health services, family and community services, personal care services, and consumer services. This career cluster includes occupations ranging from community health workers to cosmetologists and nutritionists.

Statewide Program of Study: *Family and Community Services*

The Family and Community Services program of study focuses on occupational and educational opportunities associated with social services, including child and human development and consumer sciences. This program of study includes managing social and community services, managing family and consumer sciences, and understanding career paths in social work or therapy for children, families, or school communities.



Secondary Courses for High School Credit

- | | |
|----------------|----------------------------------------------------------------------------------------------------------------------------------------------------------------------------------------|
| Level 1 | <ul style="list-style-type: none"> Principles of Human Services Principles of Community Services Professional Communications |
| Level 2 | <ul style="list-style-type: none"> Human Growth & Development Lifetime Nutrition & Wellness Interpersonal Studies Entrepreneurship 1 |
| Level 3 | <ul style="list-style-type: none"> Counseling & Mental Health |



Example Postsecondary Opportunities

Apprenticeships

- Community Health Worker Apprentice

Associate Degrees

- Social Work
- Human Development and Family Studies

Bachelor's Degrees

- Social Work
- Human Development and Family Studies

Master's, Doctoral, and Professional Degrees

- Mental Health Counseling
- Marriage and Family Therapy

Additional Stackable IBCs/License

- Certified Diabetes Educator



Work-Based Learning and Expanded Learning Opportunities

Work-Based Learning Activities

- Participate in a community health worker apprenticeship at a community health center
- Shadow a social worker in a community non-profit organization to learn about providing social and community services

Expanded Learning Opportunities

- Participate in FCCLA

Aligned Industry-Based Certifications

- TBA



Successful completion of the Family and Community Services program of study will fulfill requirements of the Public Service endorsement.



Example Aligned Occupations

Community Health Workers

Median Wage: \$39,520
Annual Openings: 501
10-Year Growth: 25%

Social and Human Service Assistants

Median Wage: \$38,442
Annual Openings: 3,298
10-Year Growth: 21%

Child, Family, and School Social Workers

Median Wage: \$49,398
Annual Openings: 2,342
10-Year Growth: 14%

Data Source: TexasWages, Texas Workforce Commission. Retrieved 3/8/2024.



For more information visit:

<https://tea.texas.gov/academics/college-career-and-military-prep/career-and-technical-education/programs-of-study/additional-resources>

Human Services Career Cluster

Public Service Endorsement

Family & Community Services Program of Study

Principles of Community
Services
(1 Credit)
7th

Professional
Communications
(0.5 Credit)
8th-12th

Principles of Human
Services
(1 Credit)
8th-12th

Human Growth &
Development
(1 Credit)
10th-12th

Entrepreneurship 1
(1 Credit)
10th-12th

Lifetime Nutrition &
Wellness
(0.5 Credit)
9th-12th

Interpersonal Studies
(0.5 Credit)
10th-12th

Counseling & Mental
Health
(1 Credit)
10th-12th

A



Information Technology Career Cluster

The Information Technology (IT) career cluster focuses on the design, development, support, and management of hardware, software, multimedia, and systems integration services. This career cluster includes occupations ranging from Software Developer and Programmer to Cybersecurity Specialists and Network Analysts.

Statewide Program of Study: Networking Systems

The Networking Systems program of study focuses on occupations and educational opportunities associated with designing and implementing computer and information networks, such as local area networks (LAN), wide area networks (WAN), intranets, extra nets, and other data communications networks. This program of study includes analysis of data processing challenges to implementing and improving computer systems.



Secondary Courses for High School Credit

- | | |
|----------------|------------------------------------------------------------------------------------------------------------------------------------------------------------------------|
| Level 1 | <ul style="list-style-type: none"> Principles of Information Technology |
| Level 2 | <ul style="list-style-type: none"> Computer Science 1 Computer Maintenance AP Computer Science Principles Entrepreneurship 1 |
| Level 4 | <ul style="list-style-type: none"> Practicum in Information Technology Practicum in Entrepreneurship |

Work-Based Learning and Expanded Learning Opportunities

Work-Based Learning Activities

- Intern at a local education, public service, or technology organization to develop skills in installing hardware and software
- Interview a network administrator to learn about their career path and what credentials they earned to be successful in their role

Expanded Learning Opportunities

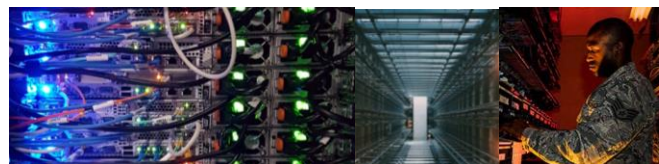
- Participate in a Hackathon
- Participate in SkillsUSA or TSA

Aligned Industry-Based Certifications

- TBA



Successful completion of the Networking Systems program of study will fulfill requirements of the Business and Industry endorsement.



Example Postsecondary Opportunities

Apprenticeships

- Network Engineer Apprenticeship

Associate Degrees

- Computer Systems Networking and Telecommunications
- Network and System Administration

Bachelor's Degrees

- Computer and Information Sciences
- Information Technology

Master's, Doctoral, and Professional Degrees

- Computer Science
- Information Technology

Additional Stackable IBCs/License

- Aruba Certified Mobility Associate (ACMA)



Example Aligned Occupations

Computer Network Support Specialists

Median Wage: \$65,646
Annual Openings: 1,634
10-Year Growth: 19%

Computer Systems Analysts

Median Wage: \$101,716
Annual Openings: 4,985
10-Year Growth: 19%

Network and Computer Systems Administrators

Median Wage: \$85,375
Annual Openings: 2,900
10-Year Growth: 20%

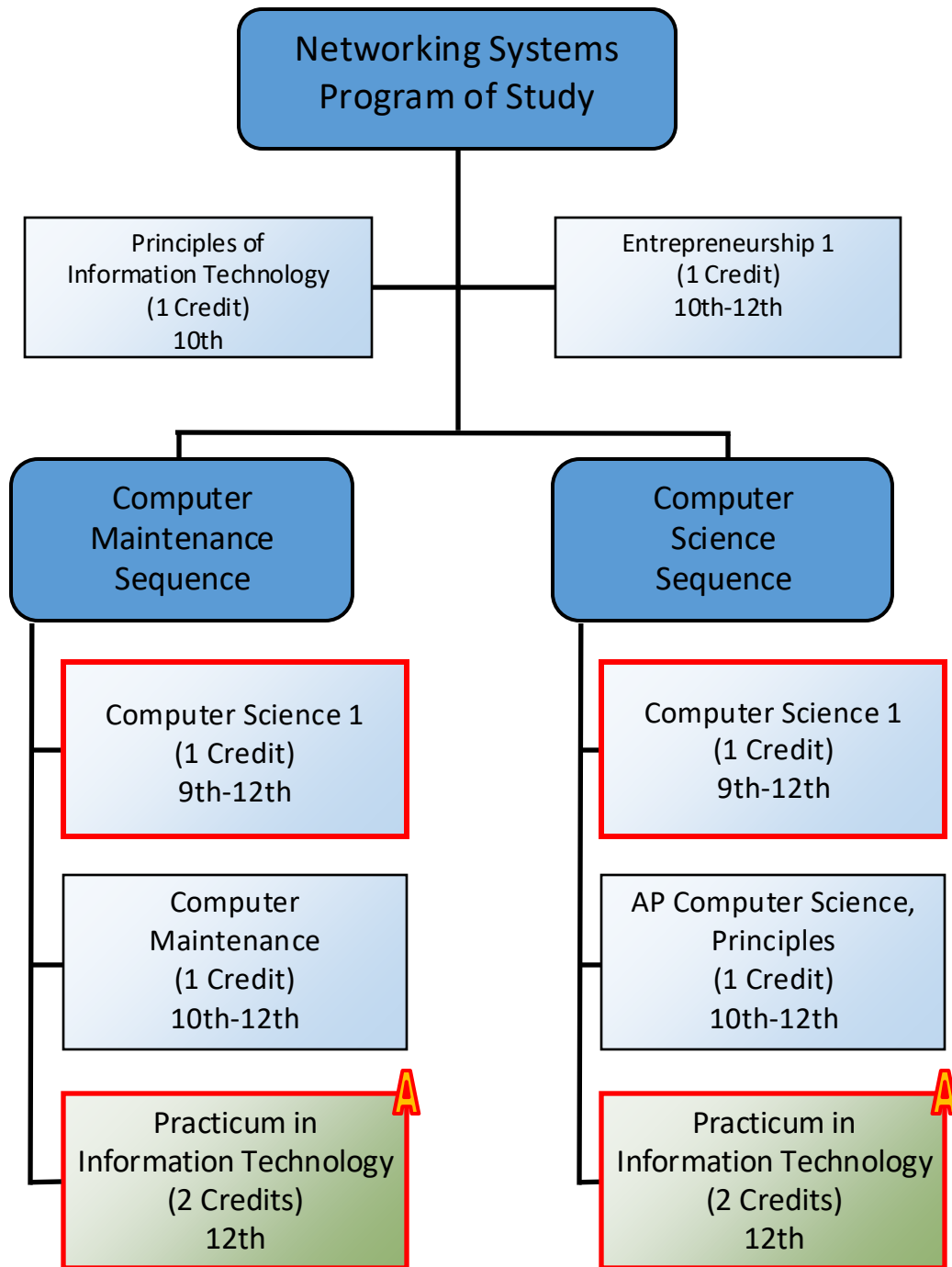
Data Source: TexasWages, Texas Workforce Commission. Retrieved 3/8/2024.



For more information visit:

<https://tea.texas.gov/academics/college-career-and-military-prep/career-and-technical-education/programs-of-study-additional-resources>

**Information Technology
Cluster**
Business & Industry Endorsement





Information Technology Career Cluster

The Information Technology (IT) career cluster focuses on the design, development, support, and management of hardware, software, multimedia, and systems integration services. This career cluster includes occupations ranging from Software Developer and Programmer to Cybersecurity Specialists and Network Analysts.

Statewide Program of Study: Programming and Software Development

The Programming and Software Development program of study focuses on occupational and educational opportunities associated with researching, designing, developing, testing, and operating systems-level software, compilers, and network distribution software for medical, industrial, military, communications, aerospace, business, scientific, and general computer applications. This program of study includes creating, modifying, and testing the codes, forms, and script that allow computer applications to run.



Secondary Courses for High School Credit

- | | |
|----------------|-----------------------------------------------------------------------------------------------------------------------------------------------------------------------------------------------------------------------------------------------------|
| Level 1 | <ul style="list-style-type: none"> Principles of Information Technology |
| Level 2 | <ul style="list-style-type: none"> Computer Science 1 AP Computer Science Principles Entrepreneurship 1 |
| Level 3 | <ul style="list-style-type: none"> AP Computer Science A |
| Level 4 | <ul style="list-style-type: none"> Practicum in Audio/Video Production Practicum in Information Technology Practicum in Science, Technology, Engineering, & Mathematics Practicum in Entrepreneurship |

Aligned Advanced Academic Courses

AP or IB	AP Calculus AB AP Statistics
-----------------	---------------------------------

Students should be advised to consider these course opportunities to enrich their preparation. AP or IB courses not listed under the Secondary Courses for High School Credit section of this framework document do not count towards concentrator/completer status for this program of study.

Work-Based Learning and Expanded Learning Opportunities

Work-Based Learning Activities

- Intern at a local IT company to develop skills in programming and coding
- Shadow a software developer to learn how they create and improve software to support efficient processes at their company

Expanded Learning Opportunities

- Program and create a game
- Participate in SkillsUSA or TSA

Aligned Industry-Based Certifications

- TBA



Successful completion of the Programming and Software Development program of study will fulfill requirements of the Business and Industry endorsement or the STEM endorsement if the math and science requirements are met.



Example Postsecondary Opportunities

Apprenticeships

- Computer Programmer Apprenticeship

Associate Degrees

- Computer Programming
- Web Page, Digital/Multimedia and Information Resources Design

Bachelor's Degrees

- Data Science
- Computer Engineering

Master's, Doctoral, and Professional Degrees

- Management Science
- Computer Software Engineering

Additional Stackable IBCs/License

- AWS Certified Developer Associate



Example Aligned Occupations

Computer User Support Specialists

Median Wage: \$51,411
Annual Openings: 5,757
10-Year Growth: 21%

Software Developers

Median Wage: \$111,705
Annual Openings: 15,324
10-Year Growth: 36%

Computer Programmers

Median Wage: \$87,997
Annual Openings: 1,176
10-Year Growth: 4%

Data Source: TexasWages, Texas Workforce Commission. Retrieved 3/8/2024.



For more information visit:

<https://tea.texas.gov/academics/college-career-and-military-prep/career-and-technical-education/programs-of-study/additional-resources>

Information Technology Cluster
Business & Industry Endorsement
Also Satisfies STEM Endorsement

**Programming & Software
Development
Program of Study**

Principles of
Information Technology
(1 Credit)
9th-10th

Entrepreneurship 1
(1 Credit)
10th-12th

Computer Science 1
(1 Credit)
9th-12th

AP Computer Science,
Principles
(1 Credit)
10th-12th

AP Computer Science A
(1 Credit)
11th-12th

Practicum in
Information Technology
(2 Credits)
12th

A



Law and Public Service Career Cluster

The Law and Public Service career cluster focuses on planning, managing, and providing legal services, public safety, protective services, and homeland security, including professional and technical support services. This career cluster includes occupations ranging from police officer and firefighter to political scientist and lawyer.

Statewide Program of Study: Law Enforcement

The Law Enforcement program of study focuses on occupational and educational opportunities associated with the development and enforcement of laws by various branches of law enforcement. This program of study includes the history, organization, and functions of local, state, and federal law enforcement. Students will understand the role of constitutional law at local, state, and federal levels; the U.S. legal system; criminal law; and law enforcement terminology and the classification and elements of crime.



Secondary Courses for High School Credit

- | | |
|----------------|------------------------------------------------------------------------------------------------------------------------------------------------------------------------------------------------|
| Level 1 | <ul style="list-style-type: none"> Principles of Law, Public Safety, Corrections, & Security |
| Level 2 | <ul style="list-style-type: none"> Law Enforcement 1 Criminal Investigation |
| Level 3 | <ul style="list-style-type: none"> Law Enforcement 2 Correctional Services Counseling and Mental Health |
| Level 4 | <ul style="list-style-type: none"> Forensic Science Practicum in Law, Public Safety, Corrections, & Security Law Academy 1 & Law Academy 2 (PRACLPS1) |

Aligned Advanced Academic Courses

Dual Credit	Criminal Justice Core, Occupational Certificate
--------------------	-------------------------------------------------

Students should be advised to consider these course opportunities to enrich their preparation. AP or IB courses not listed under the Secondary Courses for High School Credit section of this framework document do not count towards concentrator/completer status for this program of study.

Work-Based Learning and Expanded Learning Opportunities

- | | |
|----------------------------------------|-------------------------------------------------------------------------------------------------------------------------------------------------------------------------------------------------------------------------------------------------------------------|
| Work-Based Learning Activities | <ul style="list-style-type: none"> Shadow a detective to learn about investigations and the role of detectives in law enforcement Intern in dispatch at a local law enforcement agency to learn about first responder roles and processes |
| Expanded Learning Opportunities | <ul style="list-style-type: none"> Visit a police department Participate in TSA or SkillsUSA |

Aligned Industry-Based Certifications

- IAED Emergency Telecommunicator



Successful completion of the Law and Public Service program of study will fulfill requirements of the Public Services endorsement.



Example Postsecondary Opportunities

Apprenticeships

- Security Specialist

Associate Degrees

- Criminal Justice
- Law Enforcement

Bachelor's Degrees

- Forensic Science
- Criminal Justice

Master's, Doctoral, and Professional Degrees

- Criminal Justice
- Criminology and Criminal Justice

Additional Stackable IBCs/Licensures

- Jailer – Basic County Corrections
- Basic Telecommunicator



Example Aligned Occupations

Police and Sheriff's Patrol Officers

Median Wage: \$64,373
Annual Openings: 5,424
10-Year Growth: 13%

Detectives and Criminal Investigators

Median Wage: \$82,090
Annual Openings: 1,536
10-Year Growth: 8%

First-Line Supervisors of Police and Detectives

Median Wage: \$97,571
Annual Openings: 5,461
10-Year Growth: 12%

Data Source: TexasWages, Texas Workforce Commission. Retrieved 3/8/2024.



For more information visit:

<https://tea.texas.gov/academics/college-career-and-military-prep/career-and-technical-education/programs-of-study-additional-resources>

Law Enforcement Program of Study

Principles of Law, Public Safety,
Corrections, & Security
(1 Credit)
9th-12th

Criminal Investigation
(1 Credit)
10th-12th

Law Enforcement 1
(1 Credit)
10th-12th

Law Enforcement 2
(1 Credit)
10th-12th

Correctional Services
(1 Credit)
10th-12th

Counseling & Mental Health
(1 Credit)
10th-12th

Forensic Science
(1 Science Credit)
10th-12th

Practicum in Law,
Public Safety,
Corrections, & Security
(2 Credits)
11th-12th

Law & Public Service Cluster *Public Service Endorsement*



Manufacturing Career Cluster

The Manufacturing career cluster focuses on planning, managing, and performing the processing of materials into intermediate or final products and related professional and technical support activities such as production planning and control, maintenance, and process engineering. This career cluster includes occupations ranging from welder and machinist to industrial engineering technician and semi-conductor processing technician.

Statewide Program of Study: Robotics and Automation Technology

The Robotics and Automation Technology program of study focuses on occupational and educational opportunities associated with the assembly, operation, maintenance, and repair of electromechanical equipment or devices. This program of study includes exploration of a variety of mechanical fields, including robotics, refinery and pipeline systems, deep ocean exploration, and hazardous waste removal.



Secondary Courses for High School Credit

- | | |
|----------------|--------------------------------------------------------------------------------------------------------------------------|
| Level 1 | <ul style="list-style-type: none"> Principles of Manufacturing Principles of Applied Engineering |
| Level 2 | <ul style="list-style-type: none"> Robotics 1 |
| Level 3 | <ul style="list-style-type: none"> Robotics 2 Engineering Design & Presentation 1 |
| Level 4 | <ul style="list-style-type: none"> Practicum in Manufacturing |



Example Postsecondary Opportunities

Associate Degrees

- Instrumentation Technology
- Industrial Technology
- Robotics Technology
- Automation Engineer Technology



Bachelor's Degrees

- Mechanical Engineering
- Electrical Electronics Engineering
- Electrical, Electronic, and Communications Engineering Technology
- Electromechanical Engineering Technology

Master's, Doctoral, and Professional Degrees

- Mechanical Engineering
- Engineering/Industrial Management
- Industrial Engineering
- Electrical and Electronics Engineering

Work-Based Learning and Expanded Learning Opportunities

Work-Based Learning Activities	<ul style="list-style-type: none"> Intern with a robotics technician working at a manufacturing plant Shadow a PLC programmer
Expanded Learning Opportunities	<ul style="list-style-type: none"> Tour a manufacturing facility Participate in SkillsUSA or TSA Build a robot and participate in a robotics competition

Aligned Industry-Based Certifications

- TBA



Successful completion of the Robotics and Automation Technology program of study will fulfill requirements of the Business and Industry Endorsement or the STEM endorsement if the math and science requirements are met.



Example Aligned Occupations

Computer Numerically Controlled Tool Operators

Median Wage: \$46,353
Annual Openings: 1,146
10-Year Growth: 10%

Semiconductor Processing Technicians

Median Wage: \$36,902
Annual Openings: 621
10-Year Growth: 9%

Industrial Engineers

Median Wage: \$100,000
Annual Openings: 1,898
10-Year Growth: 26%

Data Source: TexasWages, Texas Workforce Commission. Retrieved 3/8/2024.



For more information visit:

<https://tea.texas.gov/academics/college-career-and-military-prep/career-and-technical-education/programs-of-study-additional-resources>

Manufacturing Cluster
Business & Industry Endorsement
Also Satisfies STEM Endorsement

**Robotics & Automation
Technology
Program of Study**

Principles of Manufacturing
(1 Credit)
7th-8th

Principles of Applied
Engineering
(1 Credit)
8th-12th

Robotics 1
(1 Credit)
9th-10th

Robotics 2
(1 Credit)
10th-12th

Engineering Design &
Presentation 1
(1 Credit)
10th-12th

Practicum in Robotics
(2 Credits)
11th-12th

A

A

A

Manufacturing Career Cluster

The Manufacturing career cluster focuses on planning, managing, and performing the processing of materials into intermediate or final products and related professional and technical support activities such as production planning and control, maintenance, and process engineering. This career cluster includes occupations ranging from welder and machinist to industrial engineering technician and semi-conductor processing technician.

Statewide Program of Study: *Welding*

The Welding Program of Study focuses on the development and use of automatic and computer-controlled machines, tools, and robots that perform work on metal or plastic. CTE learners will learn how to modify parts to make or repair machine tools or maintain individual machines and how to use hand-welding or flame-cutting equipment.



Secondary Courses for High School Credit

- | | |
|----------------|----------------------------------------------------------------------------------------------------------------|
| Level 1 | <ul style="list-style-type: none"> Principles of Manufacturing Introduction to Welding |
| Level 2 | <ul style="list-style-type: none"> Welding 1 Entrepreneurship 1 |
| Level 3 | <ul style="list-style-type: none"> Welding 2 |
| Level 4 | <ul style="list-style-type: none"> Practicum in Manufacturing |



Example Postsecondary Opportunities

Apprenticeships

- Welding

Associate Degrees

- Welding Technology
- Building/Construction Site Management
- Operations Management and Supervision

Bachelor's Degrees

- Welding Technology
- Construction Management
- Project Management
- Building/Construction Site Management

Master's, Doctoral, and Professional Degrees

- Engineering
- Engineering/Industrial Management
- Manufacturing Engineering
- Construction Engineering



Work-Based Learning and Expanded Learning Opportunities

Work-Based Learning Activities

- Job shadow a welder
- Intern for a local welding company

Expanded Learning Opportunities

- Tour a welding shop
- Participate in SkillsUSA or TSA
- Participate in a welding project that benefits the community

Aligned Industry-Based Certifications

- AWS
- NCCER Core



Example Aligned Occupations

Welders, Cutters, Solderers, and Brazers

Median Wage: \$48,177
Annual Openings: 6,792
10-Year Growth: 23%

First-Line Supervisors of Production and Operating Workers

Median Wage: \$62,584
Annual Openings: 5,926
10-Year Growth: 17%

Industrial Production Managers

Median Wage: \$119,691
Annual Openings: 1,296
10-Year Growth: 19%



Successful completion of the Welding program of study will fulfill requirements of the Business and Industry endorsement.

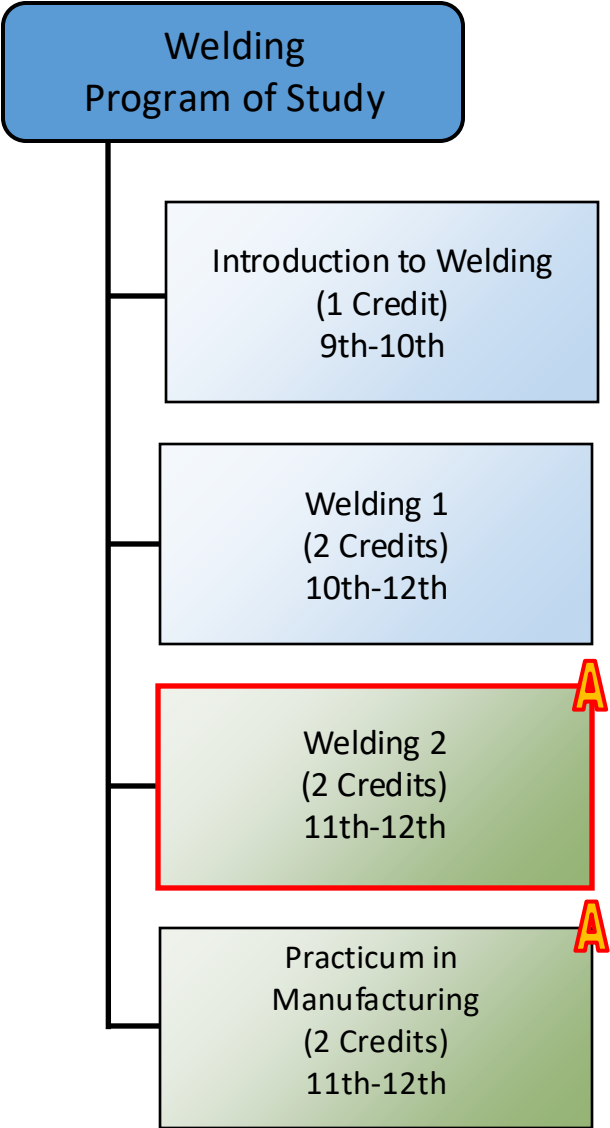
Data Source: TexasWages, Texas Workforce Commission. Retrieved 3/8/2024.



For more information visit:

<https://tea.texas.gov/academics/college-career-and-military-prep/career-and-technical-education/programs-of-study-additional-resources>

**Manufacturing
Cluster**
Business & Industry Endorsement





Transportation, Distribution, and Logistics Career Cluster

The Transportation, Distribution, and Logistics career cluster focuses on planning, management, and movement of people, materials, and goods by road, pipeline, air, rail, and water. It also includes transportation infrastructure planning and management, logistics services, and mobile equipment and facility maintenance. This career cluster includes occupations ranging from automotive mechanic, avionics technician, and automotive entrepreneur to pilots and logistics planning professionals.

Statewide Program of Study: Automotive and Collision Repair

The Automotive and Collision Repair program of study focuses on the occupational and educational opportunities associated with servicing, repairing, and refinishing various types of vehicles. This program of study includes diagnosing and servicing vehicles and learning about processes, technologies, and materials used in reconstructing vehicles.



Secondary Courses for High School Credit

- | | |
|----------------|-----------------------------------------------------------------------------------------------------------------------------------------------------|
| Level 2 | <ul style="list-style-type: none"> Automotive Basics Entrepreneurship 1 |
| Level 3 | <ul style="list-style-type: none"> Automotive Technology 1: Maintenance & Light Repair |
| Level 4 | <ul style="list-style-type: none"> Automotive Technology 2: Automotive Service Extended Practicum in Transportation Systems |



Example Postsecondary Opportunities

Apprenticeships

- Automotive Technician Apprenticeship

Associate Degrees

- Automobile/Automotive Mechanics Technology
- Autobody/Collision and Repair Technology

Bachelor's Degrees

- Autobody/Collision and Repair Technology
- Heavy Equipment Maintenance Technology

Additional Stackable IBCs/License

- Automobile and Light Truck Certification (A1 – A9)



Example Aligned Occupations

Automotive Service Technicians and Mechanics

Median Wage: \$44,809
Annual Openings: 6,285
10-Year Growth: 10%

Bus and Truck Mechanics and Diesel Engine Specialists

Median Wage: \$50,967
Annual Openings: 3,096
10-Year Growth: 19%

First-Line Supervisors of Mechanics, Installers, and Repairers

Median Wage: \$66,535
Annual Openings: 5,019
10-Year Growth: 19%

Work-Based Learning and Expanded Learning Opportunities

Work-Based Learning Activities

- Shadow an automotive technician at a car dealership
- Intern at a rental car company and assist technicians with vehicle maintenance
- Work at a local automotive repair shop and hold both customer service duties and automatic repair duties

Expanded Learning Opportunities

- Join a related automotive association and attend events
- Participate in SkillsUSA

Aligned Industry-Based Certifications

- ASE Refrigerant Recovery and Recycling



Successful completion of the Automotive and Collision Repair program of study will fulfill requirements of the Business and Industry endorsement.

Data Source: TexasWages, Texas Workforce Commission. Retrieved 3/8/2024.



For more information visit:

<https://tea.texas.gov/academics/college-career-and-military-prep/career-and-technical-education/programs-of-study-additional-resources>

Transportation, Distribution, & Logistics Cluster

Business & Industry Endorsement

Automotive & Collision Repair Technology Program of Study

Automotive Basics
(1 Credit)
9th-12th

Entrepreneurship 1
(1 Credit)
10th-12th

Automotive Technology 1:
Maintenance & Light Repair
(2 Credits)
10th-12th

Automotive Technology 2:
Automotive Services
(2 Credits)
11th-12th

Practicum in
Transportation Systems
(2 Credits)
12th

A

A

A



Transportation, Distribution, and Logistics Career Cluster

The Transportation, Distribution, and Logistics career cluster focuses on planning, management, and movement of people, materials, and goods by road, pipeline, air, rail, and water. It also includes transportation infrastructure planning and management, logistics services, and mobile equipment and facility maintenance. This career cluster includes occupations ranging from automotive mechanic, avionics technician, and automotive entrepreneur to pilots and logistics planning professionals.

Statewide Program of Study: Distribution, Logistics, and Warehousing

The Distribution, Logistics and Warehousing program of study focuses on educational and occupational opportunities associated with business planning and management aspects of distribution, logistics and warehousing. This program of study includes exploration of the history, laws, regulations, and common practices used in the logistics of warehousing and distribution systems.



Secondary Courses for High School Credit

- | | |
|---------|-----------------------------------------------------------------------------------------------------------------------------------------------------|
| Level 1 | <ul style="list-style-type: none"> Principles of Distribution & Logistics |
| Level 2 | <ul style="list-style-type: none"> Concepts of Distribution & Logistics Technology Management of Transportation Systems |
| Level 3 | <ul style="list-style-type: none"> Distribution & Logistics |

Aligned Advanced Academic Courses

Dual Credit

Global Logistics and Supply Chain Management Certificate of Technology

Students should be advised to consider these course opportunities to enrich their preparation. AP or IB courses not listed under the Secondary Courses for High School Credit section of this framework document do not count towards concentrator/completer status for this program of study.

Work-Based Learning and Expanded Learning Opportunities

Work-Based Learning Activities

- Intern at a fulfillment center to learn about planning and distribution of goods
- Shadow an operations manager at a local company's warehouse to learn about the people and technology resources necessary to implement an operations plan

Expanded Learning Opportunities

- Attend transportation, distribution and logistics expos
- Join the Transportation Association, Supply Chain Association, or Freight Forwarder and attend events with students

Aligned Industry-Based Certifications

- TBA



Successful completion of the Distribution, Logistics, and Warehousing program of study will fulfill requirements of the Business and Industry endorsement.



Example Postsecondary Opportunities

Apprenticeships

- Motor Transport Operator Apprenticeship

Associate Degrees

- Logistics, Materials, and Supply Chain Management
- Transportation and Mobility Management

Bachelor's Degrees

- Transportation and Mobility Management
- Logistics and Supply Chain Management

Master's, Doctoral, and Professional Degrees

- Supply Chain Management
- Transportation and Mobility Management

Additional Stackable IBCs/License

- Commercial Driver's License
- Certified Supply Chain Professional



Example Aligned Occupations

Shipping, Receiving, and Inventory Clerks

Median Wage: \$36,363
Annual Openings: 7,293
10-Year Growth: 7%

Production, Planning, and Expediting Clerks

Median Wage: \$48,887
Annual Openings: 4,415
10-Year Growth: 21%

Transportation, Storage, and Distribution Managers

Median Wage: \$97,989
Annual Openings: 1,377
10-Year Growth: 22%

Data Source: TexasWages, Texas Workforce Commission. Retrieved 3/8/2024.

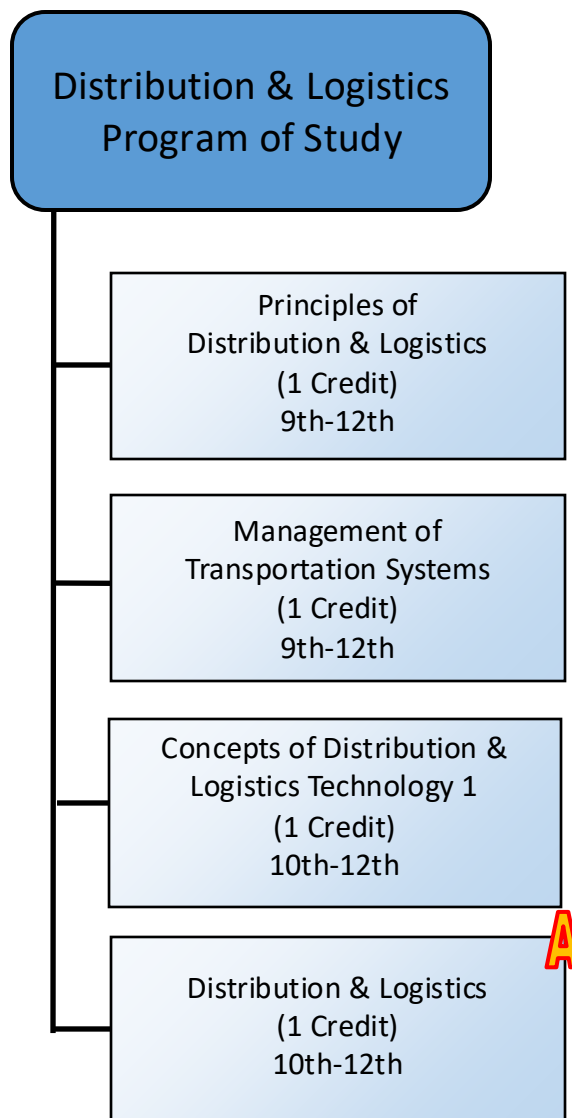


For more information visit:

<https://tea.texas.gov/academics/college-career-and-military-prep/career-and-technical-education/programs-of-study-additional-resources>

Transportation, Distribution, & Logistics Cluster

Business & Industry Endorsement



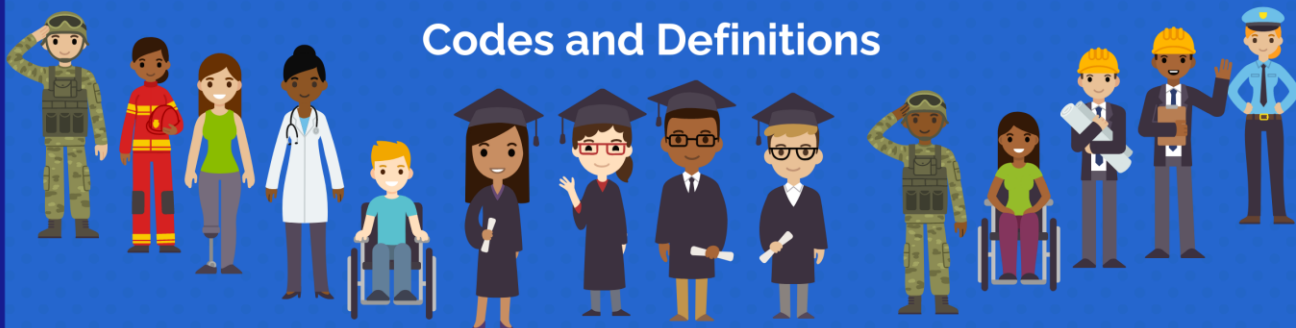
TECHNICAL DUAL CREDIT PROGRAMS

Barbering
Electrical Technician
EMT
Cosmetology Operator
Diesel Truck Technician
Global Logistics
HVAC Technician
Medical Assistant*
Pharmacy Technician
Pipefitting
Plumbing
Welding Operator*

*See CTE Counselor for more details

Texas CTE Indicator Autocoding

Codes and Definitions



Not CTE

Code 4 (Not CTE): A student who never enrolled or who did not complete any high-school CTE course as defined by 19 TAC Chapter 126 (C), 127 (B) or 130.



CTE Participants

Code 5 (CTE Participant): A student completing EITHER: Only one CTE course for any number of credits; OR More than one course for less than two credits where a CTE course is defined by 19 TAC 126 (C), Chapter 127 (B) or 130 (the student does not have to pass or receive credit).



CTE Explorers

Code E (CTE Explorer): A student completing two or more high school CTE courses for a total of two or more credits defined by 19 TAC Chapter 126 (C), 127 (B) or 130 and not a participant, concentrator or completer (the student does not have to pass or receive credit).



CTE Explorers*

***Code E (CTE Explorer):** A student completing enough program of study courses in a regional program of study to be coded a 6 or 7, but completes the school year in a district and geographic region where the regional program is not approved. The code 6 or 7 is changed to a code E.



CTE Concentrators

Code 6 (CTE Concentrator): A student completing and passing two or more 19 TAC Chapter 126 (C), 127 (B) or 130 CTE courses for a total of at least two credits within the same program of study and not a completer.



CTE Completers

Code 7 (CTE Completer): A student completing and passing three or more 19 TAC Chapter 126 (C), 127 (B) or 130 CTE courses for a total of four or more credits within a program of study, including one level three or level four course from within the same program of study.

*Regional programs of study are approved in ESC geographic regions where there is specialized regional labor market demand for specific occupations. Students concentrating (code 6) and/or completing (code 7) a program of study outside of approved geographic ESC regions are assigned a code E (Explorer).

CTE MASTER CONTACT LIST

Campus	First Name	Last Name	Email Address	Cluster	Room #	Ext.
Middle Schools						
CMS	Dumasia	Boyd	dboyd@galenaparkisd.com	CCR	B213	4539
CMS	Ashleigh	Carter	acarter@galenaparkisd.com	Arts, Audio Visual Technology, and Communications	C222	4555
CMS	Zachary	Everett	zeverett@galenaparkisd.com	CCR	B206	4536
CMS	Monica	Johnson	mdjohnson@galenaparkisd.com	CCR Encounters	D230	4515
CMS	Shelby	Johnson	sjohnson@galenaparkisd.com	Arts, Audio Visual Technology, and Communications	C130	4576
CMS	Kimberly	Lane	klane@galenaparkisd.com	CCR	C126	4527
CMS	Braelynn	Pickrom	bpickrom@galenaparkisd.com	CCR Resource	C220	4543
CMS	Roland	Ridley	rridley@galenaparkisd.com	Manufacturing Touch Data	C132	4521
CMS	Adrian	Valentine	avalentine@galenaparkisd.com	C&C Explore Human Services	C226	4558
GPMS	Rena	Bilnoski	rbilnoski@galenaparkisd.com	CCR	E101	1780
GPMS	Daniel	Johnson	dajohnson@galenaparkisd.com	Manufacturing	Tech C	1761
GPMS	Gwendolyn	Johnson	gjohnson@galenaparkisd.com	Human Services C&C Explore	S113	1723
GPMS	Chris	Martinez	cmartinez1@galenaparkisd.com	Arts, Audio Visual Technology, and Communications C&C Explore Engineering	S117	2757
GPMS	Andrae	May	amay@galenaparkisd.com	CCR	E200	1782
GPMS	Breunna	Murray	bmurray@galenaparkisd.com	CCR	E202	1752
GPMS	Valerie	Regalado	vregalado@galenaparkisd.com	CCR	S204	1756
GPMS	Kennedi	Swanks	kswanks@galenaparkisd.com	Arts, Audio Visual Technology, and Communications Info Tech	N220	1739
GPMS	Tyneasha	Turk	tturk@galenaparkisd.com	CCR Encounters	E201	1777
GPMS	Julio	Valadez	jcvaladez@galenaparkisd.com	Info Tech	E101	1763
NSMS	Mary	Browder	mbrowder@galenaparkisd.com	C&C Explore Touch Data	B211	2638
NSMS	Christi	Ducharme	cducharme@galenaparkisd.com	CCR	C206	2692
NSMS	Marcie	Fortner	mefortner@galenaparkisd.com	CCR	B206	2685
NSMS	Patricia	Gordwin	pgordwin@galenaparkisd.com	CCR	C105	2719
NSMS	Lisa	Lenzy	llenzy@galenaparkisd.com	CCR	A105	2657
NSMS	Donald	Loving	dloving@galenaparkisd.com	Arts, Audio Visual Technology, and Communications	C209	2762
NSMS	Jennifer	Phillips	jephillips@galenaparkisd.com	CCR Encounters	D104	2678
NSMS	Angela	Speck	aspeck@galenaparkisd.com	Arts, Audio Visual Technology, and Communications	A208	2718
NSMS	Carla	Templeton	ctempleton@galenaparkisd.com	CCR Resource	B106	2672
NSMS	Jasmine	Willis	jwillis@galenaparkisd.com	C&C Explore Human Services	D106	2710
WAMS	LaRoy	Brisco	lbrisco@galenaparkisd.com	CCR	B106	4714
WAMS	Mireya	Reyes	mreyes@galenaparkisd.com	Arts, Audio Visual Technology, and Communications	A113	4726
WAMS	Louis	Skipper	lskipper@galenaparkisd.com	CCR/CCR Encounters	WAESC	4728
WAMS	Rachel	Walton	rwalton@galenaparkisd.com	CCR	A202	4741
High Schools						
ACE	Milton	Green	mgreen@galenaparkisd.com	Arts, Audio Visual Technology, and Communications	5021	3655
ACE	Christopher	Sherrard	csherrard@galenaparkisd.com	Business, Marketing, and Finance	4005	3687
ECHS	Norma	Burke	nburke@galenaparkisd.com	Business, Marketing, and Finance	222	2280
ECHS	La'Quinta	Jones	lqjones@galenaparkisd.com	Business, Marketing, and Finance	210	2280
GPHS	Patricia	Alvarez	palvarez@galenaparkisd.com	Agriculture, Food, and Natural Resources	1808	50880
GPHS	Olga	Cazares	ocazares@galenaparkisd.com	Business, Marketing, and Finance	2126	2968
GPHS	Lester	Charles	lcharles@galenaparkisd.com	Hospitality and Tourism	1832	50888
GPHS	Mike	Creed	mcreed@galenaparkisd.com	Business, Marketing, and Finance	2124	2990
GPHS	Alejandra	Cruz	alcruz@galenaparkisd.com	Health Science	2603	2980
GPHS	Dvonte	Davis	dvdavis@galenaparkisd.com	Arts, Audio Visual Technology, and Communications	2827	50903

Campus	First Name	Last Name	Email Address	Cluster	Room #	Ext.
GPHS	Roberto	Derr	rderr@galenaparkisd.com	Business, Marketing, and Finance	2121	2961
GPHS	Prisca	Diaz	pdiaz@galenaparkisd.com	General Employability	1406	2927
GPHS	Tania	Escalante	taescalante@galenaparkisd.com	Health Science	2808	50895
GPHS	Jason	Escamilla	jescamilla@galenaparkisd.com	Arts, Audio Visual Technology, and Communications	2823	50901
GPHS	Jose	Flores	jsflores@galenaparkisd.com	Education and Training	2814	50898
GPHS	Stephanie	Gonzalez	stgonzalez@galenaparkisd.com	Business, Marketing, and Finance	2812	50897
GPHS	Greg	Hendrix	ghendrix@galenaparkisd.com	Health Science	2803	50893
GPHS	Brittany	Hoggan	bhoggan@galenaparkisd.com	Law and Public Service	2502	2926
GPHS	Jonathan	James	jdjames@galenaparkisd.com	Business, Marketing, and Finance	Floater	Floater
GPHS	Paul	Johnson	pjohnson2@galenaparkisd.com	Manufacturing	1834	50890
GPHS	Coy	Kern	ckern@galenaparkisd.com	Agriculture, Food, and Natural Resources	1810	50881
GPHS	Aisha	Lee	alee@galenaparkisd.com	General Employability	1407	2928
GPHS	Marie	Martinez-Villarreal	mvmartinez@galenaparkisd.com	Hospitality and Tourism	1836	50888
GPHS	Vanessa	Merino	vmerino@galenaparkisd.com	Health Science	1506	2934
GPHS	Ambreya	Ousley	aousley@galenaparkisd.com	Health Science	Fieldhouse	2854
GPHS	Joshua	Ricks	jricks@galenaparkisd.com	Arts, Audio Visual Technology, and Communications	2826	50902
GPHS	Marcos	Rodriguez	mararodriguez@galenaparkisd.com	Manufacturing	1816	50883
GPHS	Carlos	Sosa	csosa@galenaparkisd.com	Business, Marketing, and Finance	2815	50899
GPHS	Deneitha	Thompson	dthompson@galenaparkisd.com	Law and Public Service	2802	50892
GPHS	Najee	Toran	ntoran@galenaparkisd.com	Business, Marketing, and Finance	2811	50896
GPHS	Roberto	Torres	rtorres@galenaparkisd.com	Manufacturing	1815	50882
GPHS	Yazmin	Trujillo	ytrujillo@galenaparkisd.com	Business, Marketing, and Finance	2122	2971
GPHS	Erick	Turrubiarres	eturrubiarres@galenaparkisd.com	Transportation, Distribution, and Logistics	1819	50885
GPHS	Daniel	Vasquez	devasquez@galenaparkisd.com	Law and Public Service	2801	2921
GPHS	Precious	White	pwhite@galenaparkisd.com	Engineering	1826	50887
NS 9	Vincent	Barajas	vbarajas@galenaparkisd.com	Arts, Audio Visual Technology, and Communications	2137	3511
NS 9	Ruben	Carrizal	rs carrizal@galenaparkisd.com	Law and Public Service	2214	3516
NS 9	Jtione	Cleveland	jcleveland@galenaparkisd.com	Business, Marketing, and Finance	1226	3581
NS 9	Lindsey	Evans	levans@galenaparkisd.com	Agriculture, Food, and Natural Resources	1214	3456
NS 9	Luciana	Harrison	lharrison@galenaparkisd.com	Health Science	1227	3468
NS 9	Teiondreia	Kelley	tkelley@galenaparkisd.com	Business, Marketing, and Finance	2205	3514
NS 9	Kennedy	Seriale	kseriale@galenaparkisd.com	Health Science	Fieldhouse	3782
NS 9	Aaron	Shuptrine	ashuptrine@galenaparkisd.com	Manufacturing	1836	3482
NS 9	Tomekka	Williams	tawilliams@galenaparkisd.com	Architecture & Construction Engineering	2204	3513
NS 10	Kyle	Herridge	kherridge@galenaparkisd.com	Business, Marketing, and Finance	2127	5267
NS 10	Keith	Lovinggood	klovinggood@galenaparkisd.com	Law and Public Service	1103	5220
NS 10	Elizabeth	Ruiz	eruiz@galenaparkisd.com	Health Science	2114	5257
NS 10	Sundra	Taylor	staylor@galenaparkisd.com	Business, Marketing, and Finance	2103	5250
NSSH	Kaima	Akarue	kakarue@galenaparkisd.com	Arts, Audio Video Technology, and Communications	432	4192
NSSH	Gail	Alexander	galexander@galenaparkisd.com	Career Prep	183	4831
NSSH	Calandra	Alford	cpalford@galenaparkisd.com	Business, Marketing, and Finance	446	4204
NSSH	Laina	Barajas	lbarajas@galenaparkisd.com	Arts, Audio Video Technology, and Communications	726	4277
NSSH	Lavinia	Barnett	lbarnett@galenaparkisd.com	Education and Training	466	4220
NSSH	Bryan	Barriere	bbarriere@galenaparkisd.com	Law and Public Service	433	4193
NSSH	Amie	Barton	abarton@galenaparkisd.com	Health Science	710	4271
NSSH	Alfred	Bates	abates@galenaparkisd.com	Manufacturing	264	4849
NSSH	Paulette	Brooks	pbrooks@galenaparkisd.com	Business, Marketing, and Finance	428	4191
NSSH	Keiman	Capers	kcapers@galenaparkisd.com	Business, Marketing, and Finance	452	4819
NSSH	Chronica	Colbert	ccolbert@galenaparkisd.com	Human Services	186	4837
NSSH	Jonathan	Cruz	jcruz@galenaparkisd.com	Transportation, Distribution, and Logistics	714	4276
NSSH	Arzell	Draine	adraine@galenaparkisd.com	Arts, Audio Visual Technology, and Communications	279	4861
NSSH	Wisely	Epps	wepps@galenaparkisd.com	Law and Public Service	712	4274
NSSH	Ken	Fisher	kfisher@galenaparkisd.com	Law and Public Service	711	4247
NSSH	Selisa	Freeman	sfreeman@galenaparkisd.com	Health Science	529	4240

Campus	First Name	Last Name	Email Address	Cluster	Room #	Ext.
NSSH	Damon	Galloway	dgalloway@galenaparkisd.com	Business, Marketing, and Finance	540	4248
NSSH	Rigoberto	Garza	rigarza@galenaparkisd.com	Arts, Audio Visual Technology, and Communications Business, Marketing, and Finance	532	4243
NSSH	Jonathan	Gilbreath	jpgilbreath@galenaparkisd.com	Engineering	516	4234
NSSH	Semhar	Girmay	sgirmay@galenaparkisd.com	Hospitality and Tourism	185	4836
NSSH	Colby	Green	cogreen@galenaparkisd.com	Business, Marketing, and Finance	170	4824
NSSH	Kendra	Griffith	kgriffith@galenaparkisd.com	Career Prep	181	4832
NSSH	Leslie	Gutierrez	lmgutierrez@galenaparkisd.com	Health Science	531	4242
NSSH	Melvin	Harris	mharris@galenaparkisd.com	Arts, Audio Visual Technology, and Communications	715	4286
NSSH	Daryl	Hernandez	dmhernandez@galenaparkisd.com	Transportation, Distribution, and Logistics	705	4833
NSSH	Jimmie	Hilton	jhilton@galenaparkisd.com	Arts, Audio Visual Technology, and Communications Information Technology	713	4275
NSSH	Nathaniel	Jackson	njackson@galenaparkisd.com	Hospitality and Tourism	707	4266
NSSH	Deondre	Johnson	djohnson@galenaparkisd.com	Hospitality and Tourism	709	4285
NSSH	Katie	Jones	ksjones@galenaparkisd.com	Health Science	720	4283
NSSH	Brittany	Joyner	bjoyner@galenaparkisd.com	Architecture and Construction	544	4250
NSSH	Brian	King	bking@galenaparkisd.com	Engineering	280	4862
NSSH	Jaime	Landriault	jlandriault@galenaparkisd.com	Agriculture, Food, and Natural Resources	511	4152
NSSH	Perla	Lopez		Career Prep	182	4265
NSSH	Donald	Matchett	dmatchett@galenaparkisd.com	Architecture and Construction	423	4183
NSSH	Alice	May-Sexton	mmaysexton@galenaparkisd.com	Health Science	530	4241
NSSH	Kaylin	McNary	kmcnary@galenaparkisd.com	Agriculture, Food, and Natural Resources	703	4262
NSSH	Angelica	Navarro	anavarro@galenaparkisd.com	Health Science	527	4238
NSSH	Nathalie	Pante	npante@galenaparkisd.com	Business, Marketing, and Finance Information Technology	534	4245
NSSH	Courtney	Powers	cpowers@galenaparkisd.com	Human Services	187	4838
NSSH	Gisele Previs	Price	pprice1@galenaparkisd.com	Business, Marketing, and Finance	427	4187
NSSH	Wendy	Reeves	wreeves@galenaparkisd.com	Arts, Audio Visual Technology, and Communications	165	4208
NSSH	Randle	Revilla	rrevilla@galenaparkisd.com	Law and Public Service	270	4855
NSSH	Kelly	Robertson	krobertson@galenaparkisd.com	Business, Marketing, and Finance	538	4272
NSSH	Valenia	Roy	vroym@galenaparkisd.com	Health Science	283	4865
NSSH	Joseph	Sekely	jsekely@galenaparkisd.com	Business, Marketing, and Finance	170	4824
NSSH	Lana	Shelton	lshelton@galenaparkisd.com	Business, Marketing, and Finance	269	4124
NSSH	Inethia	Sinegal	isinegal@galenaparkisd.com	Business, Marketing, and Finance	517	4235
NSSH	Dericka	Stewart	dstewart@galenaparkisd.com	Health Science	Fieldhouse	4371
NSSH	Adam	Vela	avela@galenaparkisd.com	Transportation, Distribution, and Logistics	802	4155
NSSH	Frida	Villalobos	fvillalobos@galenaparkisd.com	Law and Public Service	525	4237
NSSH	Arnesia	Walker	arwalker@galenaparkisd.com	Arts, Audio Visual Technology, and Communications	548	4251
NSSH	Daryan	Wilkerson	dwilkerson@galenaparkisd.com	Arts, Audio Visual Technology, and Communications	717	4280
NSSH	Eshmacore	Williams	ewilliams@galenaparkisd.com	Business, Marketing, and Finance	536	4246
NSSH	Dietrick	Witt	dwitt@galenaparkisd.com	Manufacturing	730	4793
NSSH	Veronica	Yanez	vyanez@galenaparkisd.com	Career Prep	405	4229