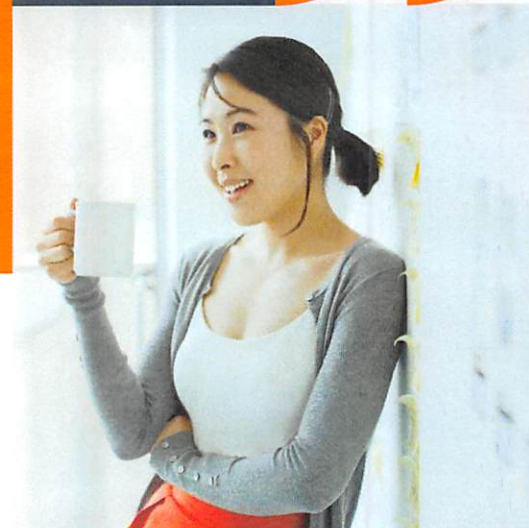


We'll help make sure your money works as hard as you do.

PNC WorkPlace Banking® lets you
show your money **who's** boss.



With smart, easy-to-use tools that let you track and manage your money how and when you want, our bank-at-work program helps you take control today and plan wisely for down the road. And that's not all:

Work with a dedicated team

PNC WorkPlace Banking® provides personalized information and guidance to help you select the products and services that are best for your needs.

Tap into free financial education and 1-to-1 appointments

Get insights and guidance to help you make smart money decisions at every stage of your financial journey.

You may earn a \$300 reward when your new PNC Mortgage is funded¹

Offer is available with a qualifying PNC WorkPlace Banking checking account.

Talk with me today

to schedule your financial wellness conversation.

Sara Johnson

sara.k.johnson@pnc.com

713-993-8587

NMLS #1462734

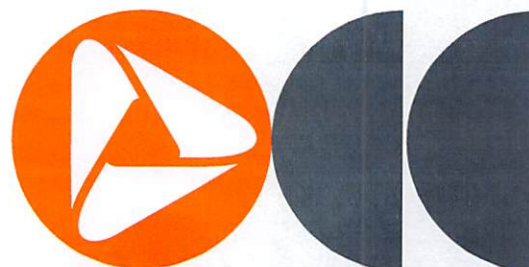
THIS ORGANIZATION AND ITS ACTIVITIES ARE NOT RELATED TO OR SPONSORED BY THE GALENA PARK INDEPENDENT SCHOOL DISTRICT.



Explore more WorkPlace Banking
offers that may be available to you²

Visit pnc.com/workplaceoffers

*Carrier fees for data usage may apply



 PNC BANK

BRILLIANTLY
BORING
SINCE 1865™

Virtual Wallet® Checking and savings in one smart, easy package

1

Spend

Your everyday checking account

2

Reserve

An additional checking account to set aside money for short-term planning

3

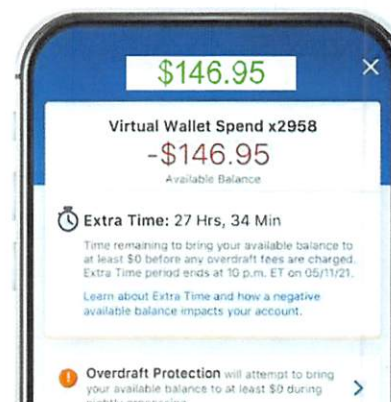
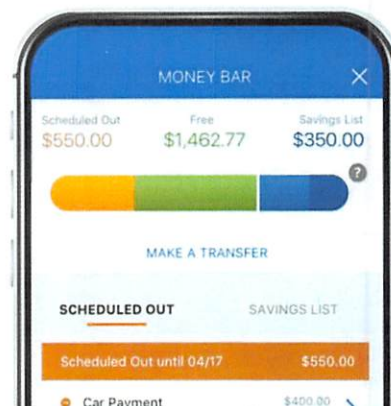
Growth

A savings account that can earn interest — ask about our rates



Innovative Online³ and Mobile Banking⁴ tools

- Money Bar and Calendar for scheduling and tracking spending
- Zelle® to send and receive money with people you know and trust.⁵
- Low Cash Mode® to help you avoid surprise overdraft fees⁶



1 To qualify for the \$300 mortgage account reward, at the time of mortgage funding, the PNC WorkPlace Banking or PNC Military Banking customer must have an eligible PNC WorkPlace Banking or PNC Military Banking Virtual Wallet with Performance Select, Virtual Wallet with Performance Spend, Virtual Wallet Checking Pro, Performance Select Checking account or Performance Checking account.

The PNC WorkPlace Banking or PNC Military Banking checking account must remain open in order for you to receive the \$300 reward, which will be credited to the eligible checking account within 90 days after conditions have been met and will be identified as "CREDITS MORTGAGE WKP MIL" on your monthly checking account statement.

Offer may be extended, modified, or discontinued at any time. The value of the reward may be reported on the appropriate Internal Revenue Service (IRS) forms, and may be considered taxable income to you. Please consult your tax adviser regarding your specific situation.

2 In order to be eligible for the WorkPlace Banking Program offers and rewards, you must apply for eligible PNC products either directly with a dedicated WorkPlace Banking Consultant or you must notify a PNC Branch Banker/PNC Customer Care Consultant that you are employed by a WorkPlace Banking company.

3 Online Banking is free to customers with an eligible account; however there may be a fee for certain optional services. We reserve the right to decline or revoke access to Online Banking or any of its services. All online banking services are subject to and conditional upon adherence to the terms and conditions of the PNC Online Banking Service Agreement.

4 PNC does not charge a fee for Mobile Banking, including PNC Alerts. However, third-party message and data rates may apply. Check with your wireless carrier for details.

5 Zelle® should only be used to send or receive money with people you know and trust. Before using Zelle® to send money, you should confirm the recipient's email address or U.S. mobile phone number. Neither PNC nor Zelle® offers purchase protection for payments made with Zelle® — for example, if you do not receive the item you paid for, or the item is not as described or as you expected. To send or receive money with Zelle®, both parties must have an eligible checking or savings account at a participating financial institution in the U.S. Transactions typically occur in minutes between enrolled users. If the recipient has not enrolled, the payment will expire after 14 calendar days. See the PNC Zelle Terms of Use for additional terms and conditions. Use of Zelle® is subject to and conditional upon adherence to the terms and conditions of the PNC Zelle® Terms of Use.

6 Low Cash Mode is only available on the Spend account of your Virtual Wallet product.

Zelle and the Zelle related marks are wholly owned by Early Warning Services, LLC and are used herein under license.

Brilliantly Boring since 1865 is a service mark of The PNC Financial Services Group, Inc.

Low Cash Mode is a registered mark of The PNC Financial Services Group, Inc.

PNC WorkPlace Banking is a registered mark of The PNC Financial Services Group, Inc.

Virtual Wallet is a registered mark of The PNC Financial Services Group, Inc.

PNC is a registered mark of The PNC Financial Services Group, Inc. ("PNC"). All loans are provided by PNC Bank, National Association, a subsidiary of PNC, and are subject to credit approval and property appraisal.



©2025 The PNC Financial Services Group, Inc. All rights reserved.

PNC Bank, National Association. Member FDIC.

CON DCARD PDF 1024-011-2546904



BRILLIANTLY
BORING
SINCE 1865™